



THE RIDGE AT VISTA POINT



VISTAPOINTVICTORIA.COM



MOUNTAINSIDE LIVING

Nestled atop Bear Mountain in Langford, The Ridge at Vista Point offers truly unbeatable views of the Juan de Fuca Strait, the Olympic Mountains and beyond. Developed by Seacliff Properties and Keycorp Developments, and built by local reputable home builder, Verity Construction, these homes will be a sophisticated offering for Victoria's Westshore.



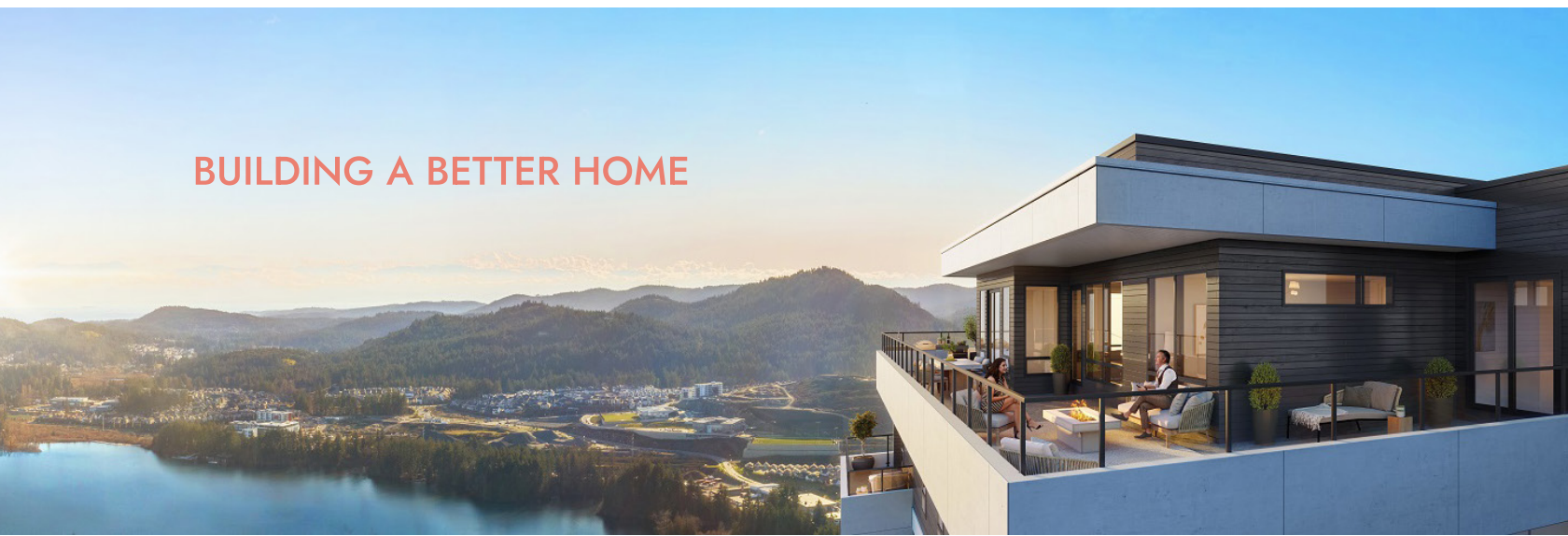
VISION

Crafted with meticulous attention to detail, from the interior architecture to the expansive outdoor patios, residences at The Ridge at Vista Point are thoughtfully curated to elevate your panoramic views, seamlessly merging indoor comfort with the beauty of the great outdoors.

Whether you're a young professional purchasing your first home, are a growing family or are at a stage in your life where you're looking for a little more freedom found in a lock-and-leave lifestyle, homes at Vista Point have something for everyone!

These contemporary 1 & 2 bedroom + den mountainside residences, penthouses and 3 bedroom townhomes offer something for everyone, no matter what stage in life you're in.

BUILDING A BETTER HOME





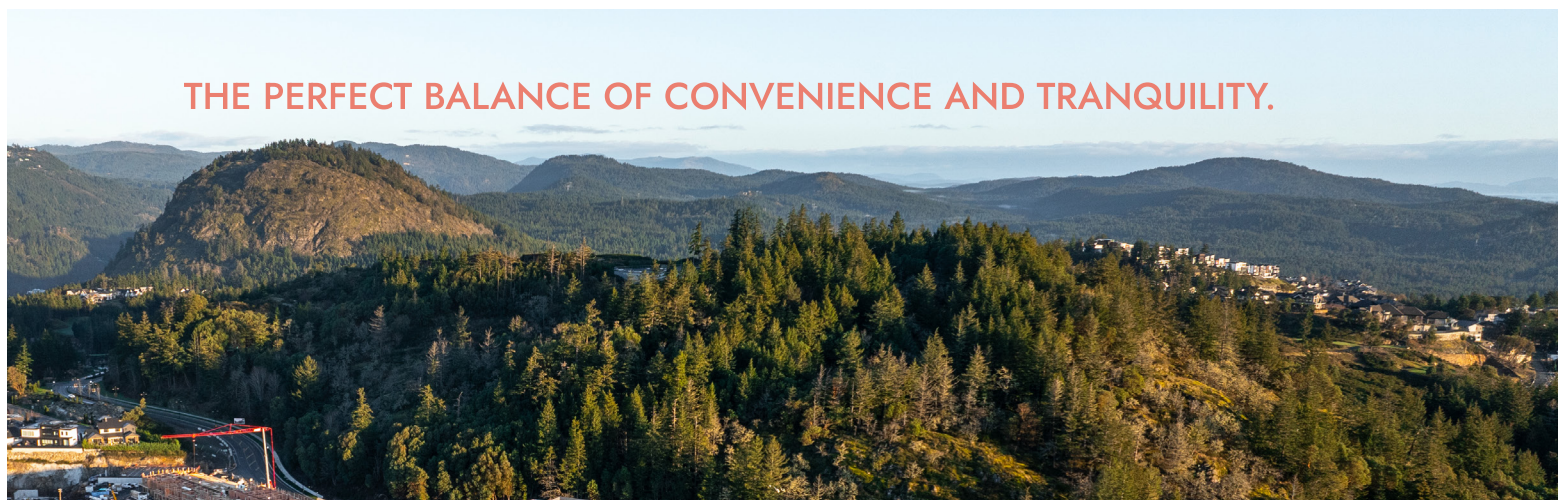
LIFESTYLE AMENITIES



- Fitness Centre with cardio and weight equipment and common outdoor patio
- Bike storage room with maintenance station and charging capabilities for electric bicycles
- Bicycle wash area in underground parkade
- Dog wash area in underground parkade
- Community garden with shared garden plots for growing and harvesting produce

NEIGHBOURHOOD

Located just minutes from the everyday essentials of Millstream Village, and within walking distance to all of the outdoor amenities of Bear Mountain, The Ridge at Vista Point offers the perfect balance of convenience and tranquility.



ON THE EDGE OF BEAR MOUNTAIN - Take advantage of all the excellent neighborhood amenities at your fingertips! Whether you're a passionate golfer or savor tranquil trailside walks with breathtaking panoramic vistas, the Bear Mountain community provides unparalleled access to the outdoor activities you love most! Conveniently located just moments from vibrant shopping, dining, and recreational activities, The Ridge at Vista Point offers the ideal balance of peaceful living and urban convenience.

NEIGHBOURHOOD

LOCATED JUST MINUTES AWAY
FROM THE EVERYDAY ESSENTIALS
OF MILLSTREAM, BEAR MOUNTAIN
AND LANGFORD

SHOPPING

1. Best Buy
2. Staples
3. Save on Foods
4. Costco
5. Market on Millstream
6. Westshore Town Centre

RESTAURANTS

1. Callisto
2. Floyd's Diner
3. Tacofino
4. Mr. Mikes Steakhouse
5. Browns Socialhouse
6. House of Boateng Cafe
7. The Rack Bistro
8. Liberty Kitchen
9. Milestones
10. 900 Degrees
11. Jack's Place

EDUCATION

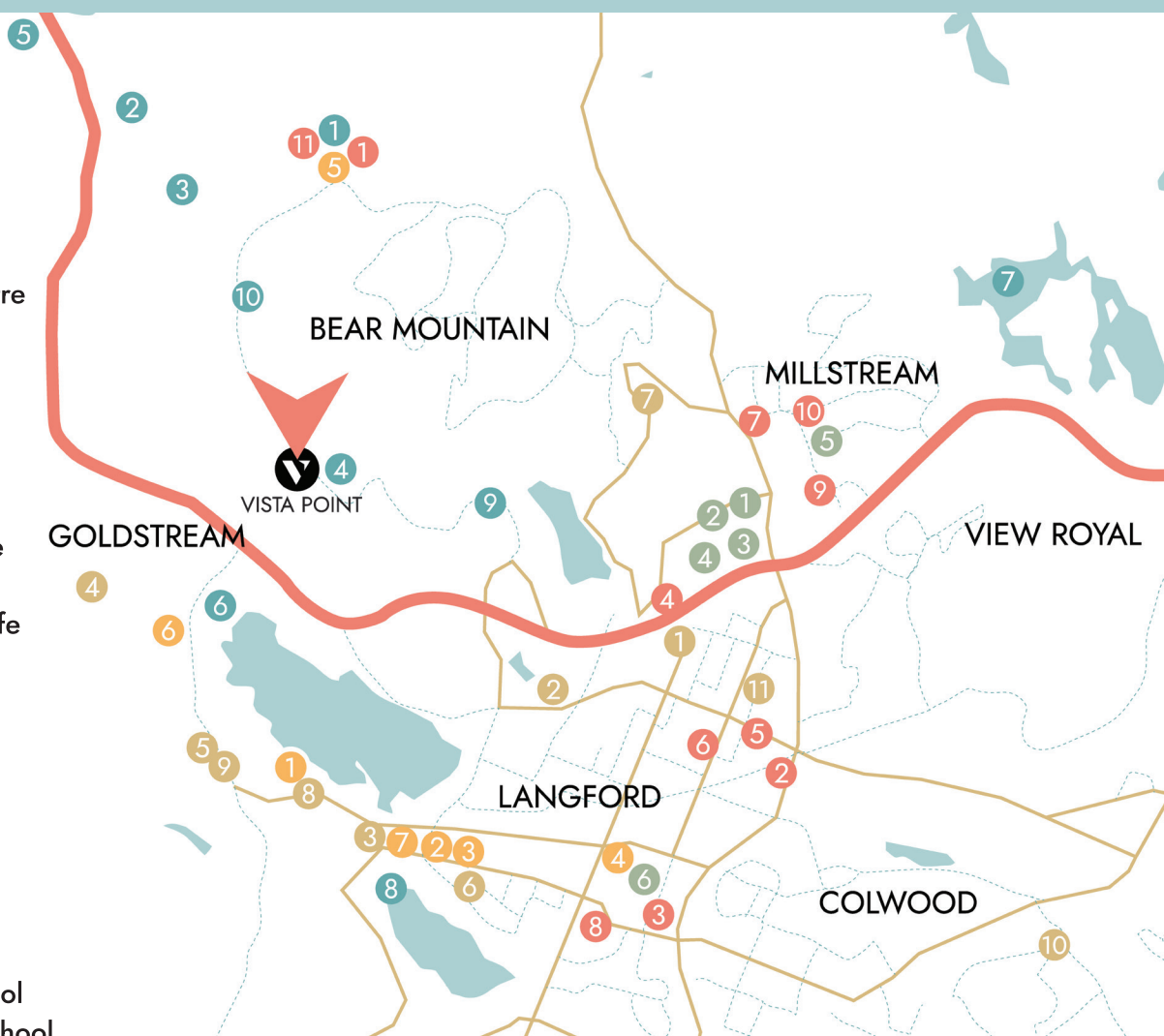
1. Ruth King Elementary
2. Spencer Middle School
3. Belmont Seconday School
4. Willway Elementary
5. Centre Mountain Lellum Middle School
6. Langford Montessori Jr. Kindergarten/Preschool
7. Lakewood Elementary
8. Victoria Conservatory of Music (Westhills)
9. PEXSISEN Elementary
10. West Shore Campus (UVic)
11. Royal Roads University

INDOOR RECREATION

1. YMCA-YWCA Westhills
2. Eagle Ridge Community Centre
3. City Centre Playzone
4. Cineplex Odeon Westshore Cinemas
5. Bear Mountain Activity Centre
6. Victoria Pickleball Centre
7. BoulderHouse Langford

OUTDOOR RECREATION

1. Bear Mountain Golf Club
2. Mt Finlayson
3. Goldstream Provincial Park
4. Bear Mountain Viewpoint
5. Niagara Falls
6. Langford Lake
7. Thetis Lake
8. Glen Lake
9. South Point Playground & Bikepark
10. Flying Fireman Park & Off Leash Dog Park



THE HOMES

AT HOME, IN THE HEART OF NATURE

Life at The Ridge is more than the space that encapsulates these contemporary view homes, it extends to the natural amenities surrounding you. Discover true harmony with your environment at Vista Point. Enjoy seamless access to a network of scenic trails and immerse yourself in Goldstream's breathtaking natural beauty, including the iconic old trestle bridge.

Plus, indulge in world-class golfing at nearby Bear Mountain Resort. With an array of amenities at your fingertips, there's no limit to the adventures awaiting you in this idyllic location. Welcome to the ultimate blend of luxury and nature.

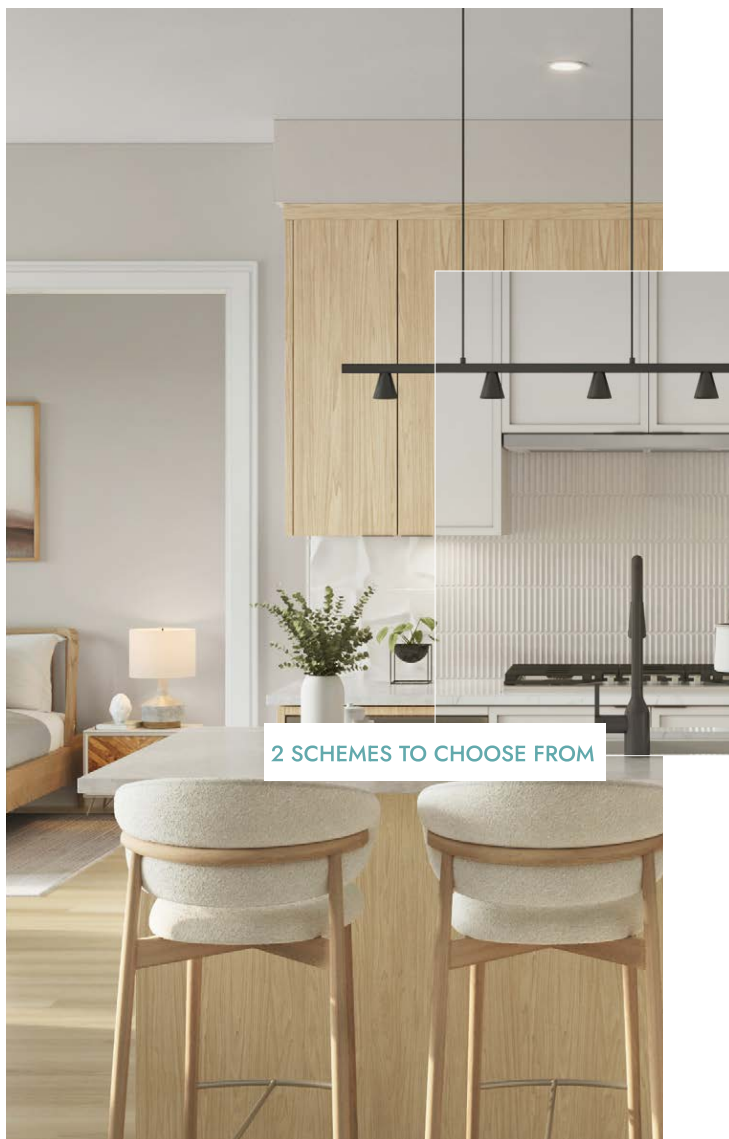


THE INTERIORS

Inspired by the breathtaking natural surroundings, every home at The Ridge was designed to highlight the views. With oversized windows providing plenty of natural light and spacious balconies creating an extension of your living space, every detail was thoughtfully curated to elevate your living experience.

PALETTES

STUNNING CHOICE OF FINISHES



Explore Vista Point's two incredible colour schemes featuring sleek, contrasting tones and clean lines!



FEATURES & FINISHES

1810 SELENITE PLACE

MOUNTAINSIDE LIVING

- 93 condos with unparalleled views of the Juan de Fuca Strait, Mt Baker and the Olympic Mountains
- 1-bedroom + den, 2 bedroom, 2-bedroom + den, and 3-bedroom homes
- Developed by Seacliff Properties and Keycorp Developments, and built by local reputable home builder, Verity Construction
- Striking architecture by Alan Lowe Architecture
- Double-height lobby with lounge to wait for your ride
- EV-ready charging network capabilities in all resident parking stalls
- 1 parking stall, 1 storage locker and bike storage included with all homes
- All of your daily essentials within a 5-minute drive - Costco, Save-on Foods, Everything Wine, Starbucks, and more
- Walking distance to all of Bear Mountain's amenities – Golf course, tennis courts, pool and recreation centre, walking paths, dog park, hiking and mountain biking trails at your doorstep
- Close to transit & schools

LIFESTYLE AMENITIES

- Fitness Centre with cardio and weight equipment
- Bike storage room with maintenance station and charging capabilities for electric bicycles
- Bicycle wash area in underground parkade
- Dog wash area in underground parkade
- Community garden with shared garden plots for growing and harvesting produce

ELEVATED INTERIORS

- Interiors designed by award-winning Nygaard Interior Design
- Choice of two colour palettes featuring sleek, contrasting tones and clean lines
- Wide-plank luxury vinyl flooring throughout the main living space
- 9-ft ceilings with large windows for optimal natural light (10-ft ceilings on level 6)
- Recessed LED lighting throughout the home
- Air conditioning and heating via 2 eco-friendly heat pumps to ensure year-round comfort
- Gas hookup on every patio/balcony for BBQ or fire table
- White solid shelves and chrome rods in all closets
- Contemporary roller blinds for control of natural light and UV protection
- Whirlpool front-loading washer and ventless heat pump dryer

KITCHENS

- Stainless steel appliance package:
 - Whirlpool 36" french door refrigerator with water dispenser
 - Whirlpool 36" gas cooktop with griddle
 - Under cabinet built-in concealed range hood fan
 - Whirlpool wall oven
 - Panasonic built-in microwave with trim kit
 - Whirlpool large capacity dishwasher
- Sleek matte black hardware and plumbing fixtures
- Contemporary cabinets and drawers with soft close feature, designed and built in Canada
- Built-in pantry with pullout shelving
- Under-cabinet LED lighting
- Premium quartz countertops with complementary tile backsplash
- Stainless steel under-mount sink with statement matte black faucet
- Recessed LED pot lights in ceiling

BATHROOMS

- Premium quartz countertops
- Tile flooring in main bathroom
- Soft-close contemporary cabinetry with under cabinet motion sensor LED lighting
- Contemporary deep soaker tub in main bathroom
- Walk-in shower in ensuite bathroom
- Modern under-mount sinks with sleek single handle faucet
- Matte black plumbing fixtures and towel bar
- Toilet with soft-close feature

SECURITY & TECHNOLOGY

- Smart entry access system at Lobby door for visitor pre-screening
- Smart Parcel system for courier and Amazon deliveries
- Secure, fob entry system to access lobby, elevator, underground parkade and amenity rooms
- Secure residential underground parking with gate
- Motion sensors on parkade lights for energy and cost efficiency
- Well-lit outdoor common areas and pedestrian walkways

PEACE OF MIND

- Comprehensive warranty protection by Travelers Guarantee Company of Canada providing coverage for:
 - 2-year material warranty
 - 5-year building envelope warranty
 - 10-year structural defects warranty

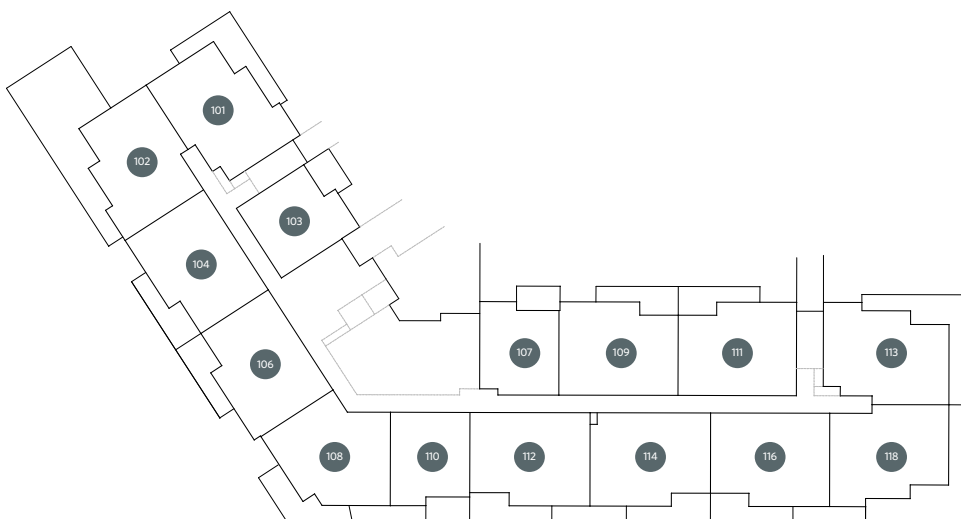
VISTAPOINTVICTORIA.COM

Sales and Marketing by Royal LePage Coast Capital Realty, Mike Hartshorne Personal Real Estate Corporation and Jenn Raappana Personal Real Estate Corporation. The developer reserves the right to make changes, modifications or substitutions to the building design, specifications and floor plans should they be necessary. Final floor plans may be a mirror image of the floor plans shown. Balcony/patio sizes vary floor to floor. Interior square footage and room sizes are based on preliminary survey measurements. Sizes are approximate and actual square footage may vary from the final survey and architectural drawings. This is not an offering for sale. Any such offering can only be made by way of disclosure statement. E. & O.E.

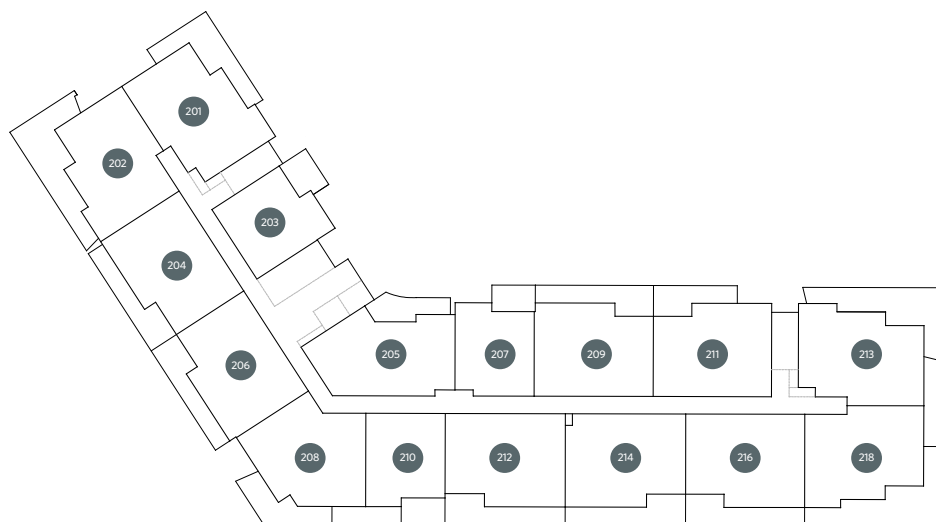


VISTA POINT

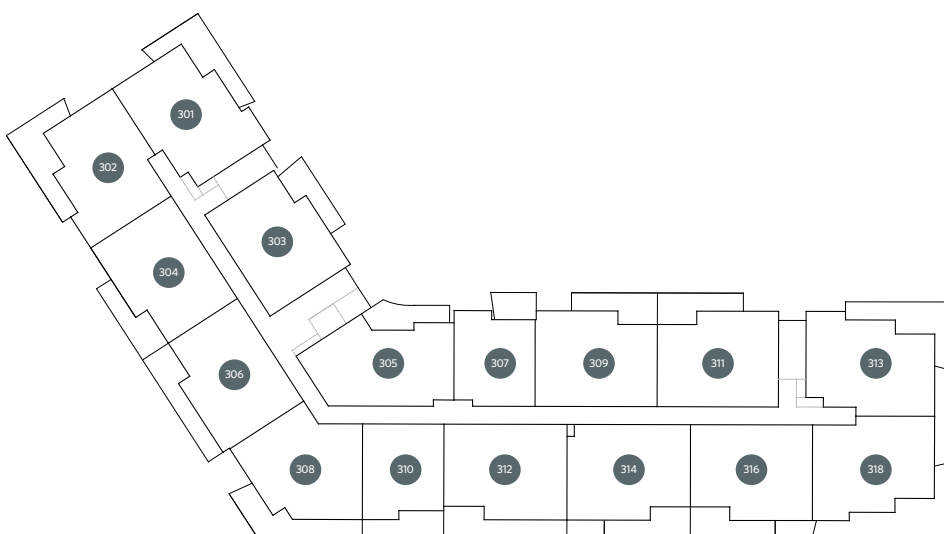
MAIN LEVEL



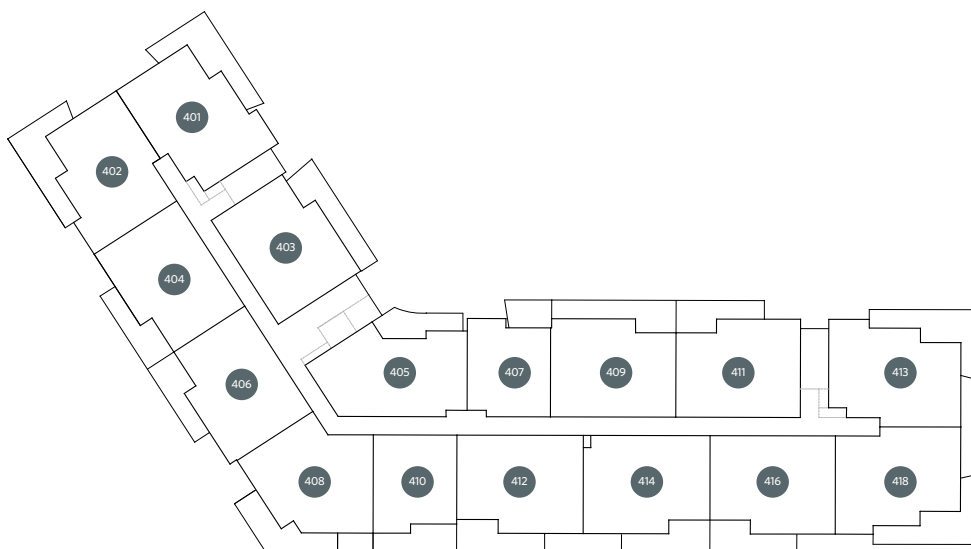
LEVEL 2



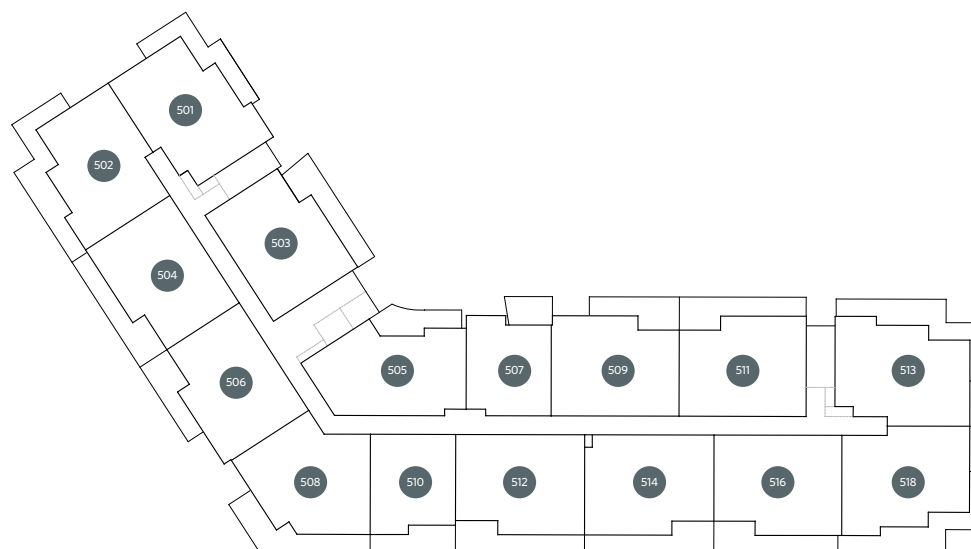
LEVEL 3



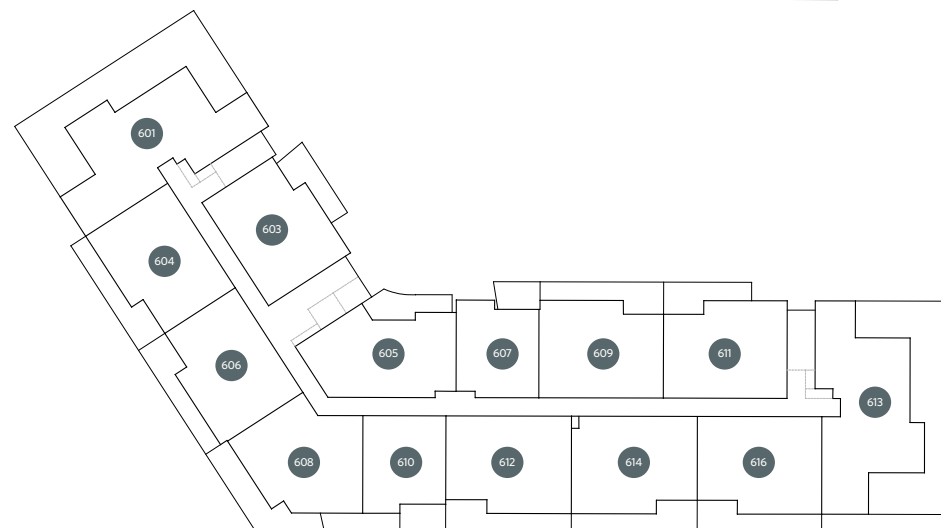
LEVEL 4



LEVEL 5



LEVEL 6



A (MAIN LEVEL)

2 Bedroom + Den

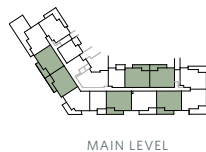
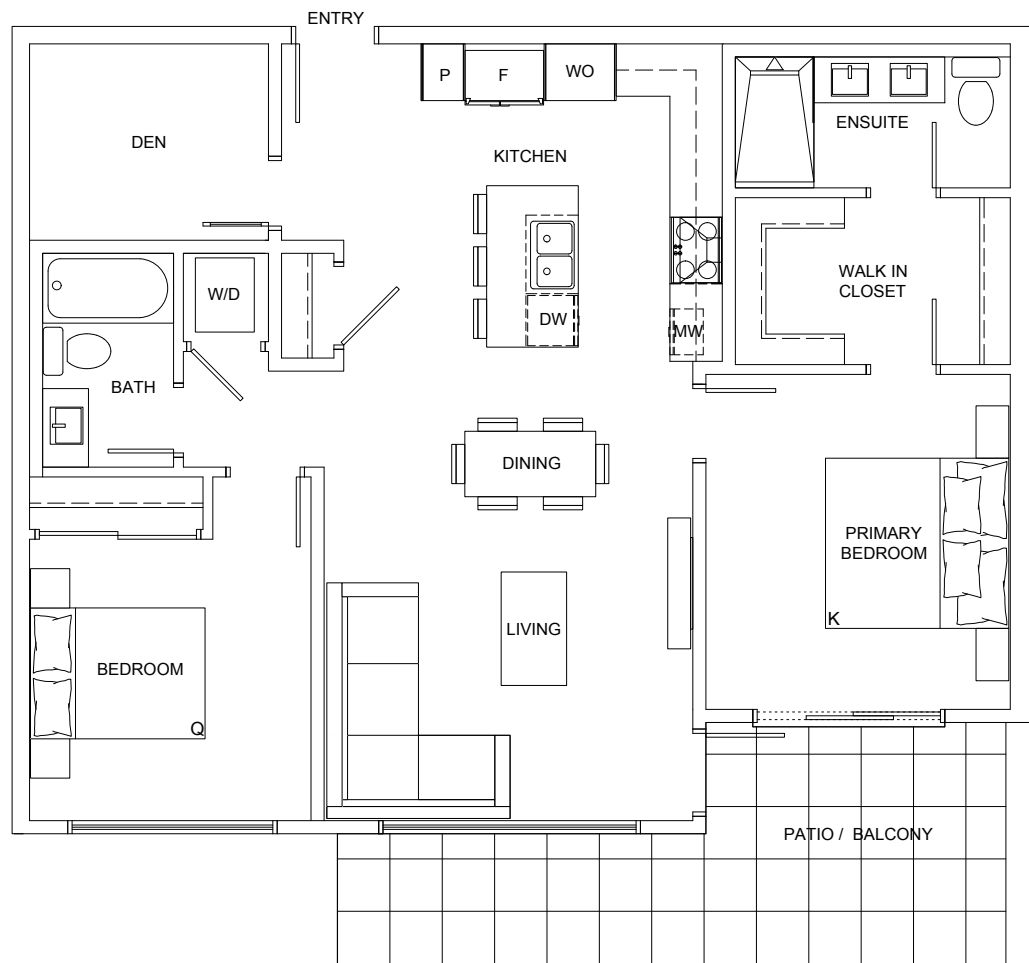
104, 111

106, 109, 112, 116

BATHROOMS: 2

INDOOR LIVING: 1123 SQ FT

OUTDOOR LIVING: 164-257 SQ FT



A (LEVEL 2-6)

2 Bedroom + Den

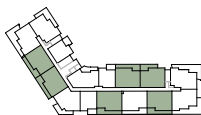
204, 211, 303, 304, 311, 403, 404, 144, 503, 504, 511,
603, 606, 611

206, 209, 212, 216, 306, 309, 312, 316, 406, 409, 412,
416, 506, 509, 512, 516, 604, 609, 612

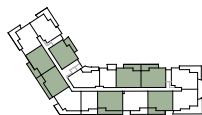
BATHROOMS: 2

INDOOR LIVING: 1123 SQ FT

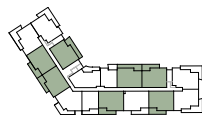
OUTDOOR LIVING: 164-257 SQ FT



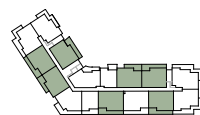
LEVEL TWO



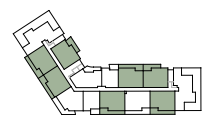
LEVEL THREE



LEVEL FOUR



LEVEL FIVE



LEVEL SIX

A1 (MAIN LEVEL)

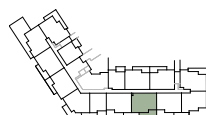
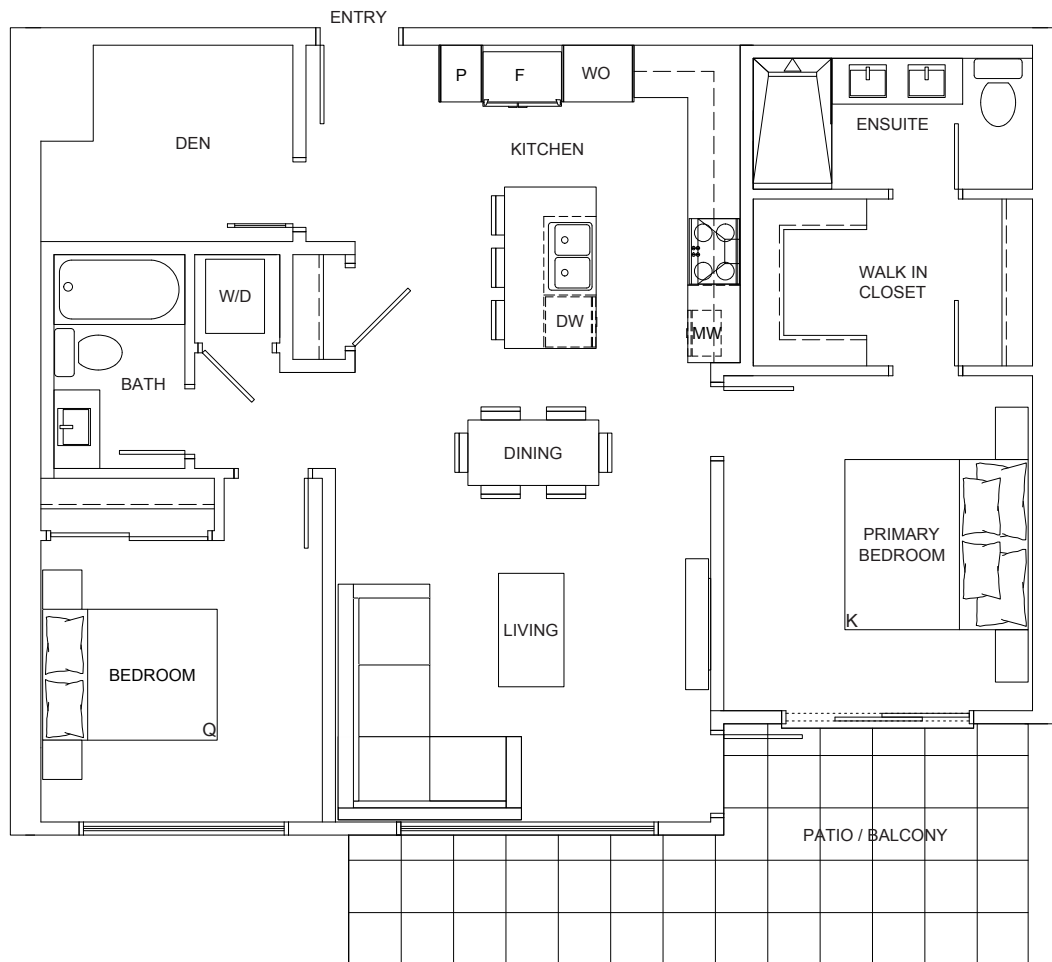
2 Bedroom + Den

114

BATHROOMS: 2

INDOOR LIVING: 1118 SQ FT

OUTDOOR LIVING: 177 SQ FT



MAIN LEVEL

A1 (LEVEL 2-6)

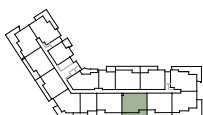
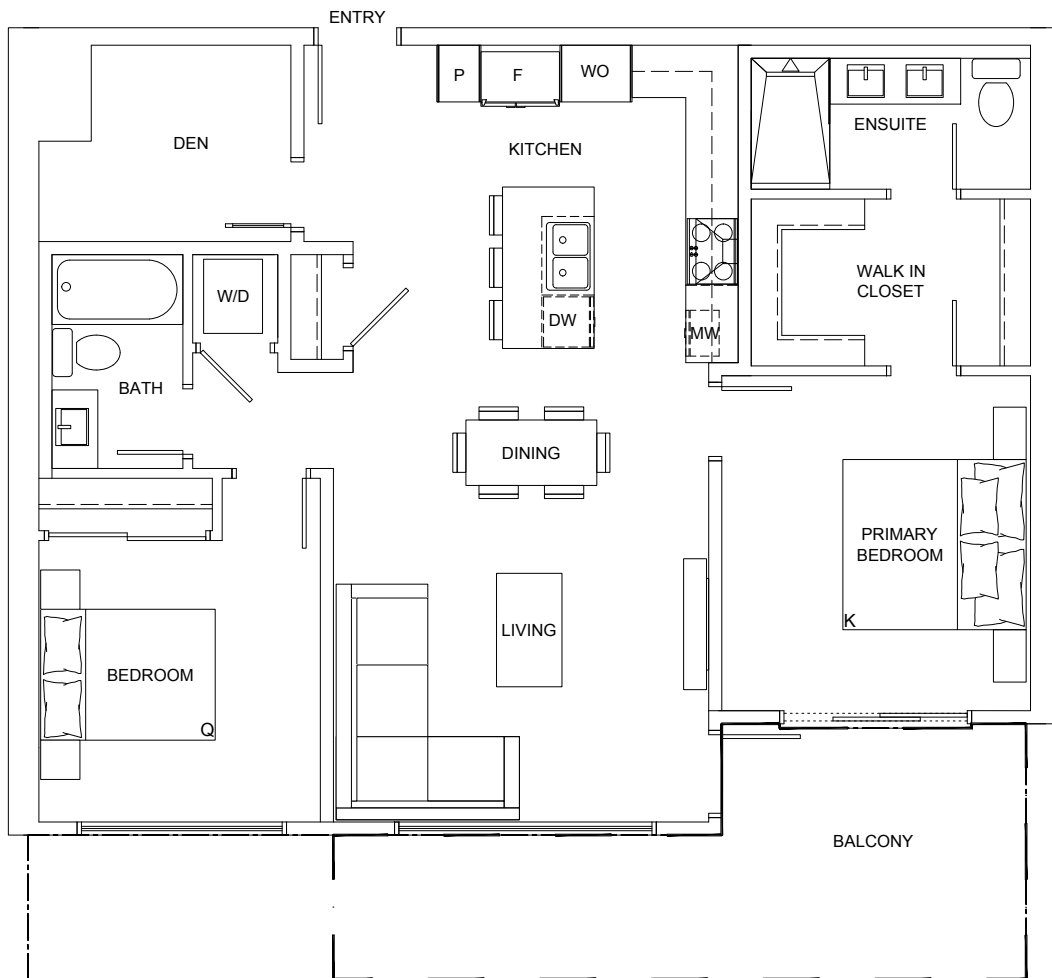
2 Bedroom + Den

214, 314, 414, 514, 614

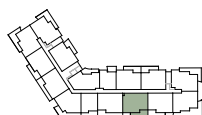
BATHROOMS: 2

INDOOR LIVING: 1118 SQ FT

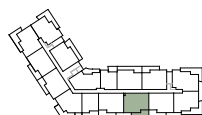
OUTDOOR LIVING: 194-258 SQ FT



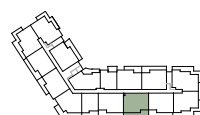
LEVEL TWO



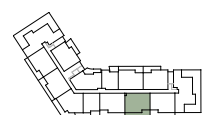
LEVEL THREE



LEVEL FOUR



LEVEL FIVE



LEVEL SIX

B (MAIN LEVEL)

2 Bedroom + Den

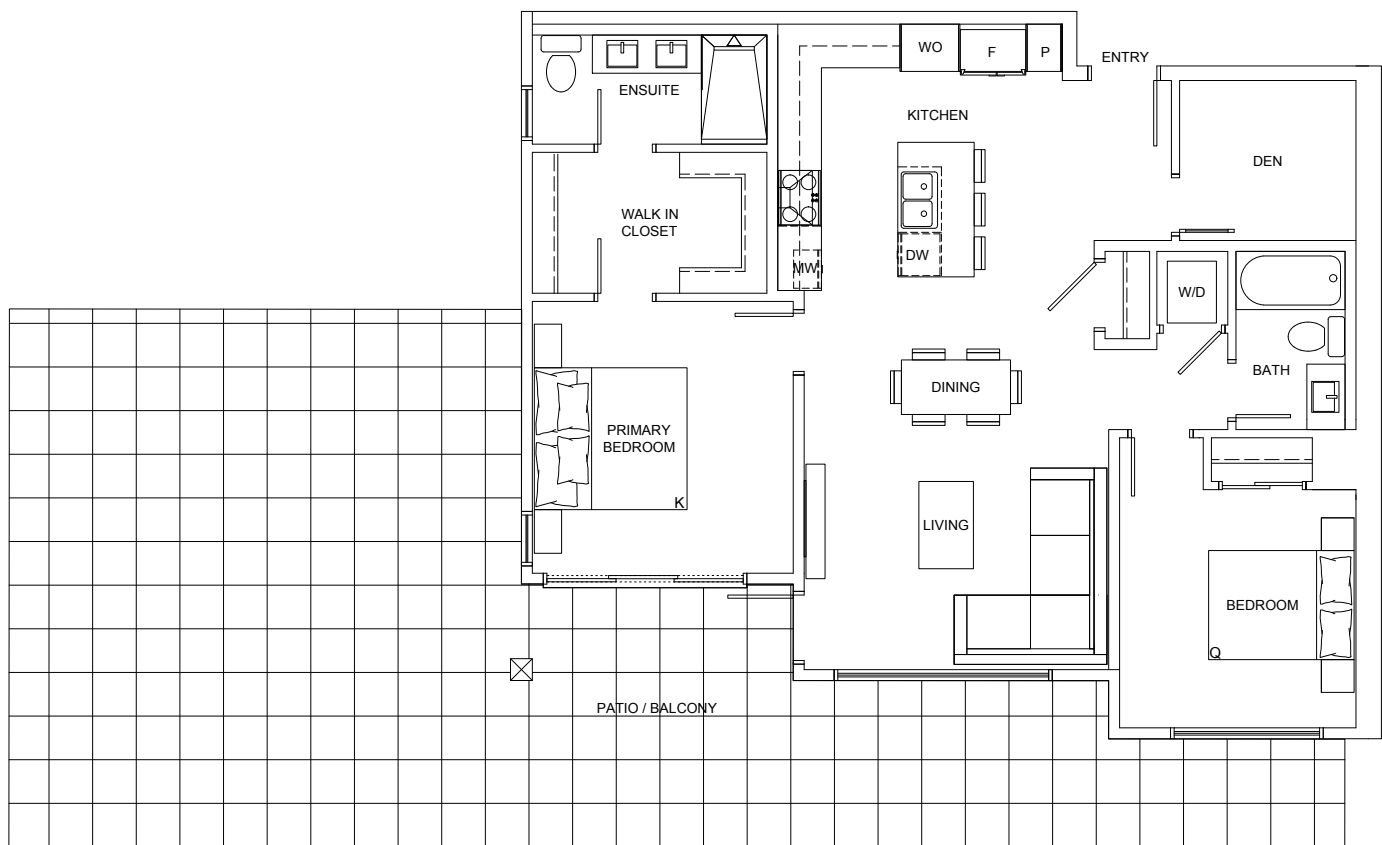
102

118

BATHROOMS: 2

INDOOR LIVING: 1110 SQ FT

OUTDOOR LIVING: 526-892 SQ FT



MAIN LEVEL

B (LEVEL 2-6)

2 Bedroom + Den

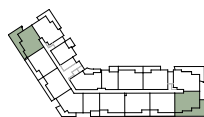
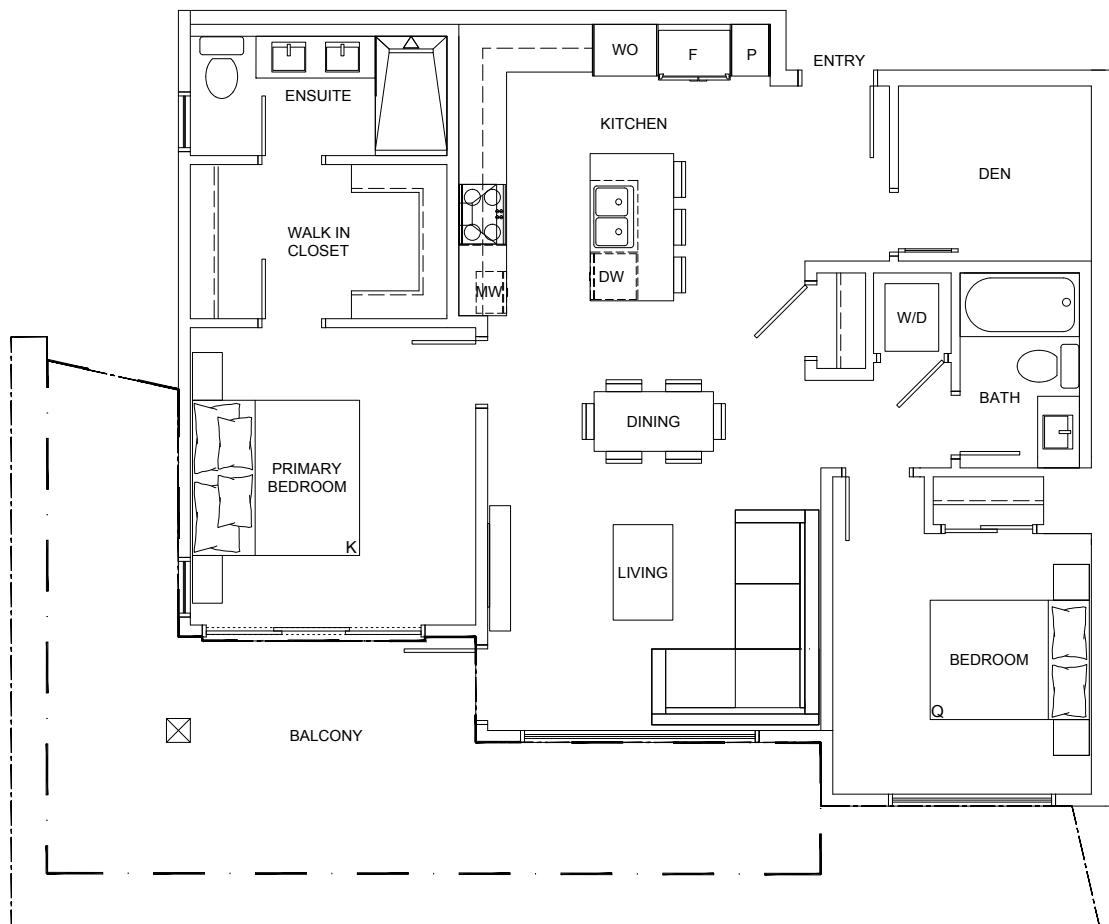
202, 302, 402, 502,

218, 318 418, 518

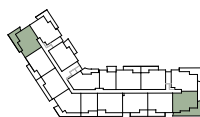
BATHROOMS: 2

INDOOR LIVING: 1110 SQ FT

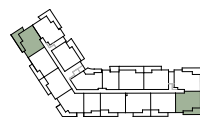
OUTDOOR LIVING: 315-531 SQ FT



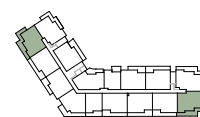
LEVEL TWO



LEVEL THREE



LEVEL FOUR



LEVEL FIVE

B1 (MAIN LEVEL)

2 Bedroom + Den

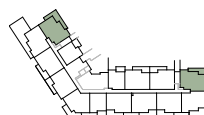
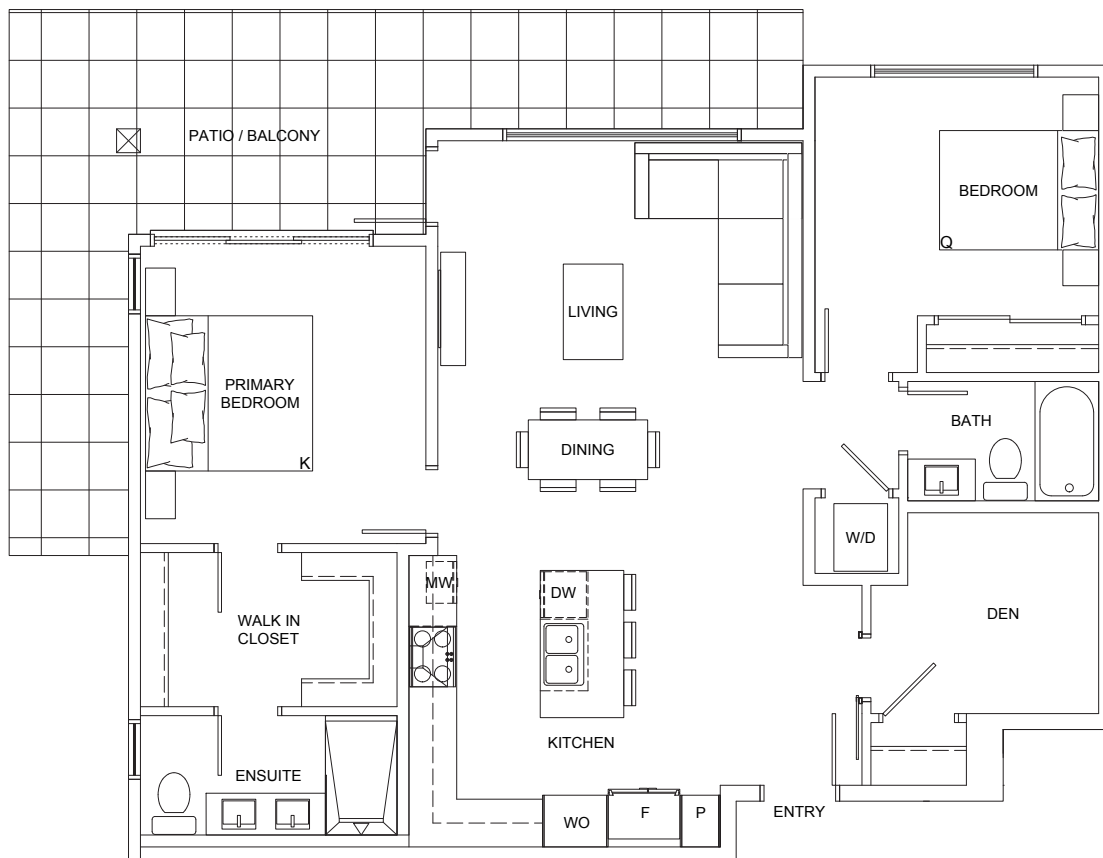
101

113

BATHROOMS: 2

INDOOR LIVING: 1156 SQ FT

OUTDOOR LIVING: 308-442 SQ FT



MAIN LEVEL

B1 (LEVEL 2-6)

2 Bedroom + Den

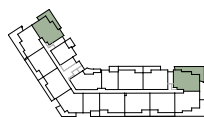
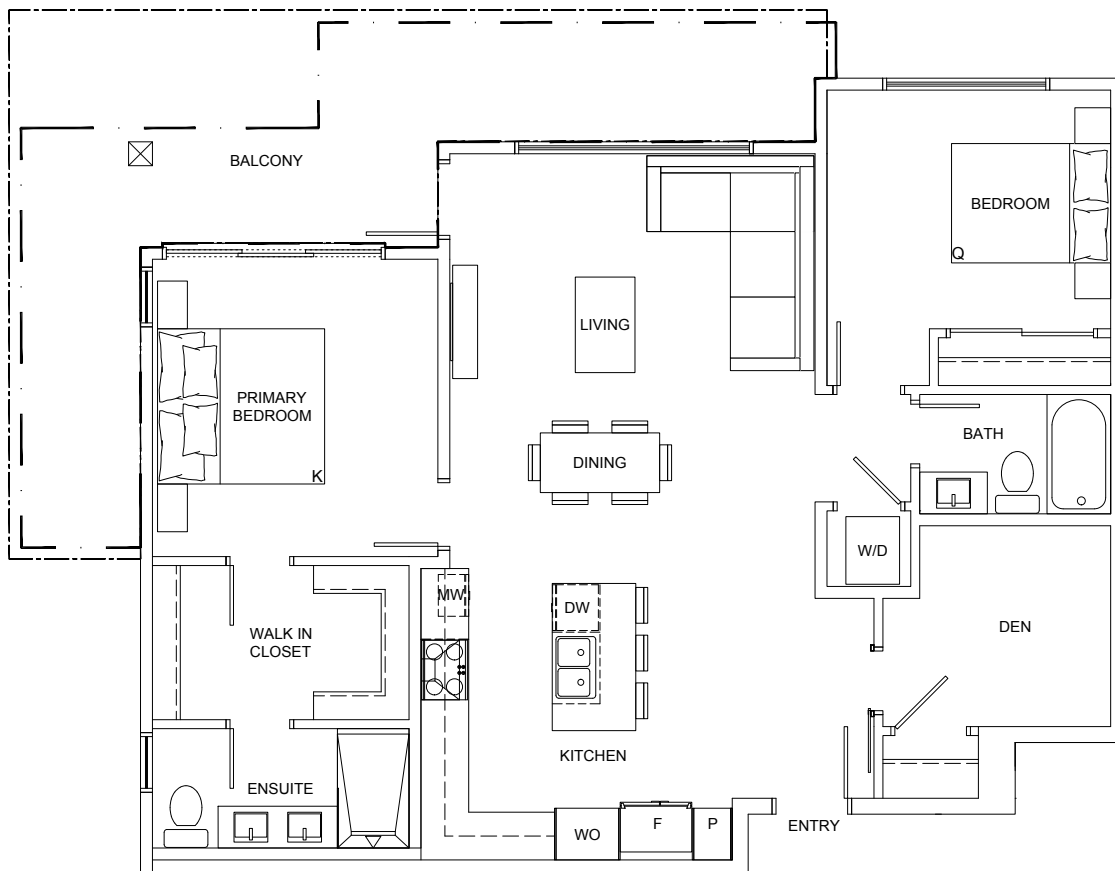
201, 301, 401, 501

213, 313, 413, 513

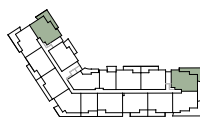
BATHROOMS: 2

INDOOR LIVING: 1156 SQ FT

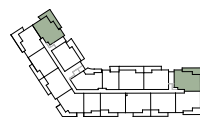
OUTDOOR LIVING: 251-488 SQ FT



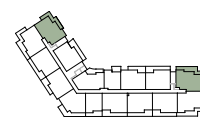
LEVEL TWO



LEVEL THREE



LEVEL FOUR



LEVEL FIVE

C (LEVEL 2-6)

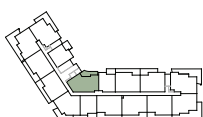
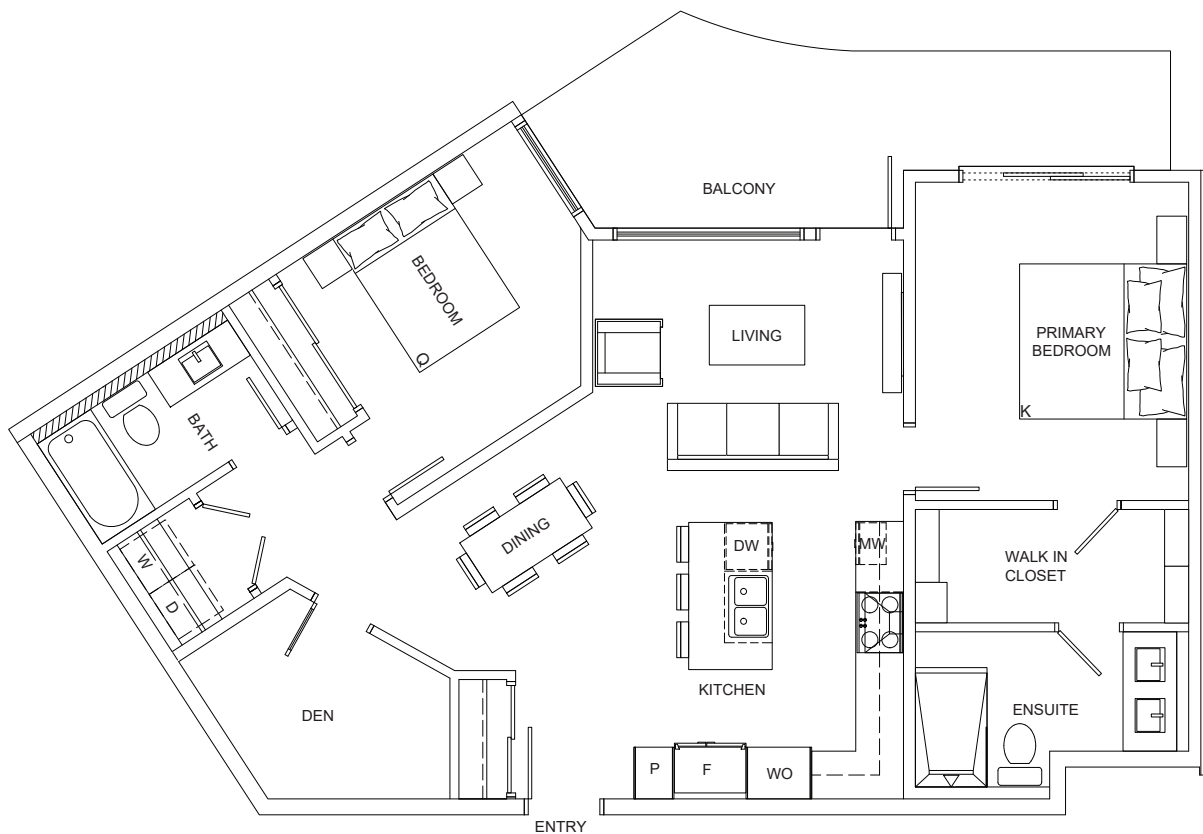
2 Bedroom + Den

205, 305, 405, 505, 605

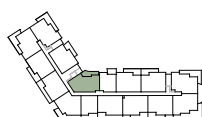
BATHROOMS: 2

INDOOR LIVING: 1112 SQ FT

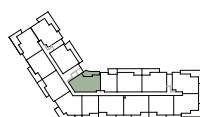
OUTDOOR LIVING: 167 SQ FT



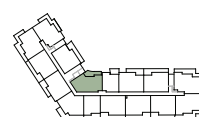
LEVEL TWO



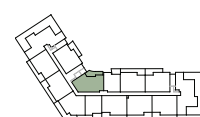
LEVEL THREE



LEVEL FOUR



LEVEL FIVE



LEVEL SIX

D (MAIN LEVEL)

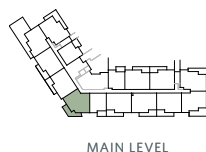
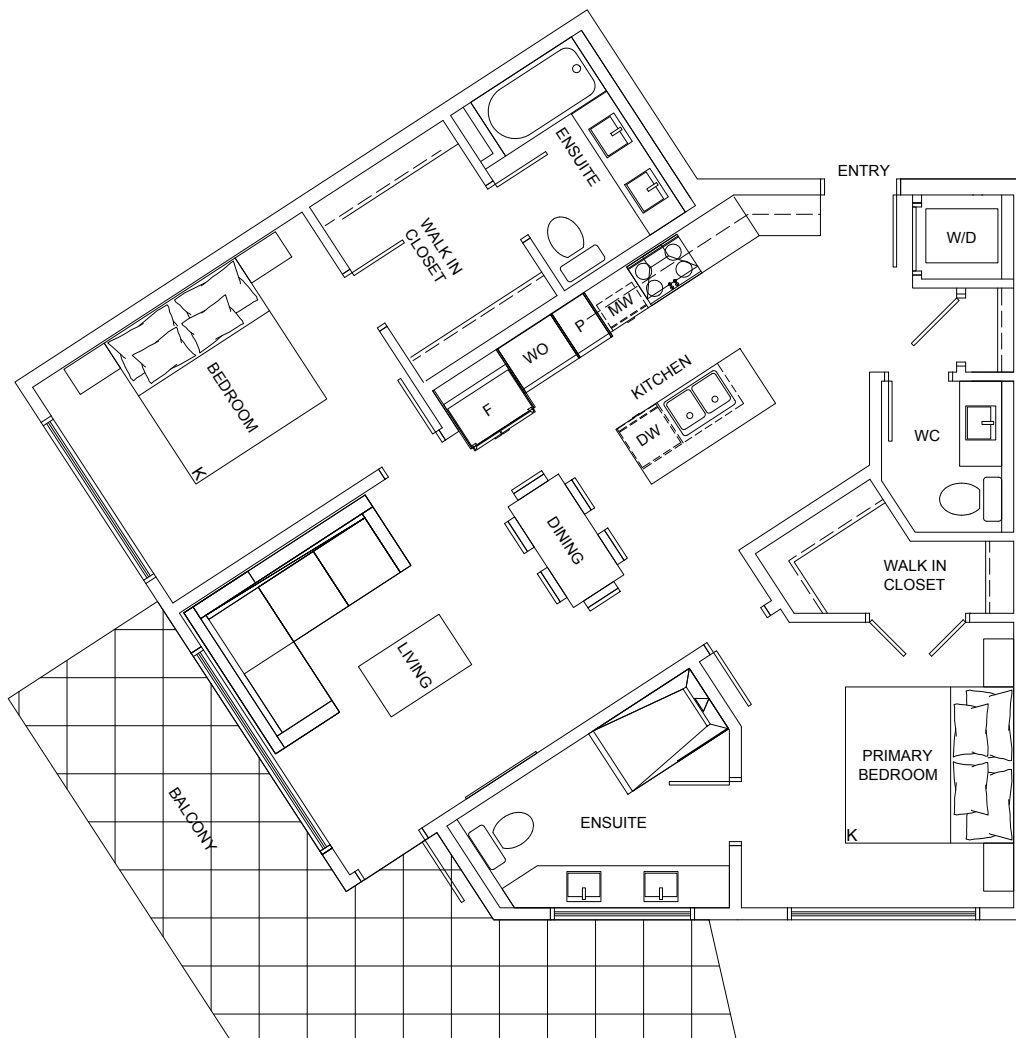
2 Bedroom

108

BATHROOMS: 3

INDOOR LIVING: 1102 SQ FT

OUTDOOR LIVING: 223 SQ FT



D (LEVEL 2-6)

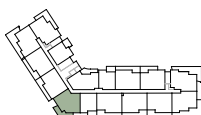
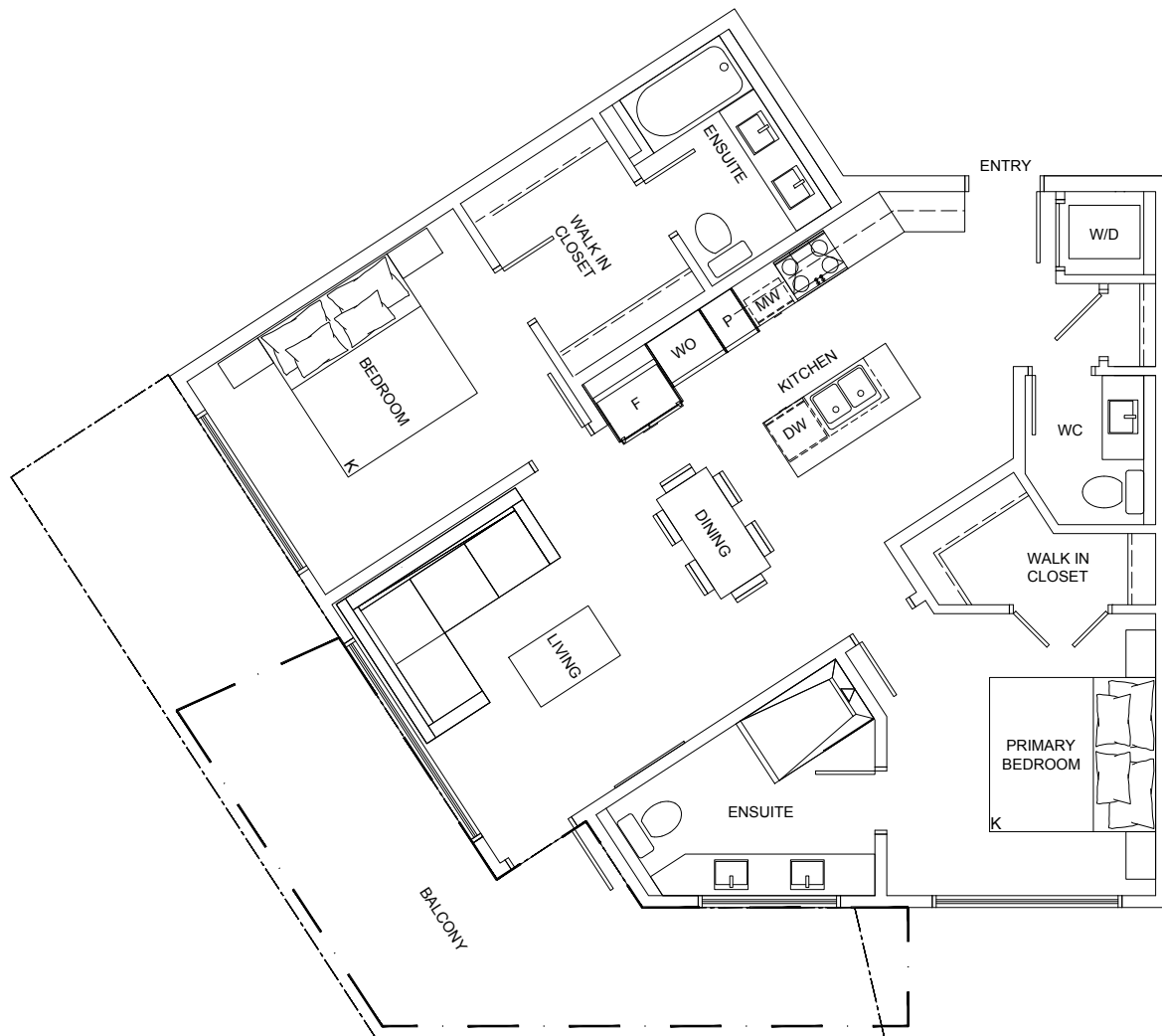
2 Bedroom

208, 308, 408, 508, 608

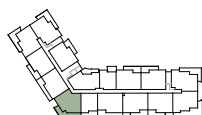
BATHROOMS: 3

INDOOR LIVING: 1102 SQ FT

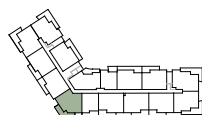
OUTDOOR LIVING: 219-329 SQ FT



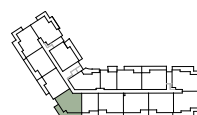
LEVEL TWO



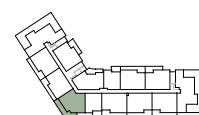
LEVEL THREE



LEVEL FOUR



LEVEL FIVE



LEVEL SIX

E (MAIN LEVEL)

1 Bedroom + Den

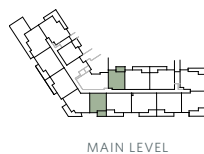
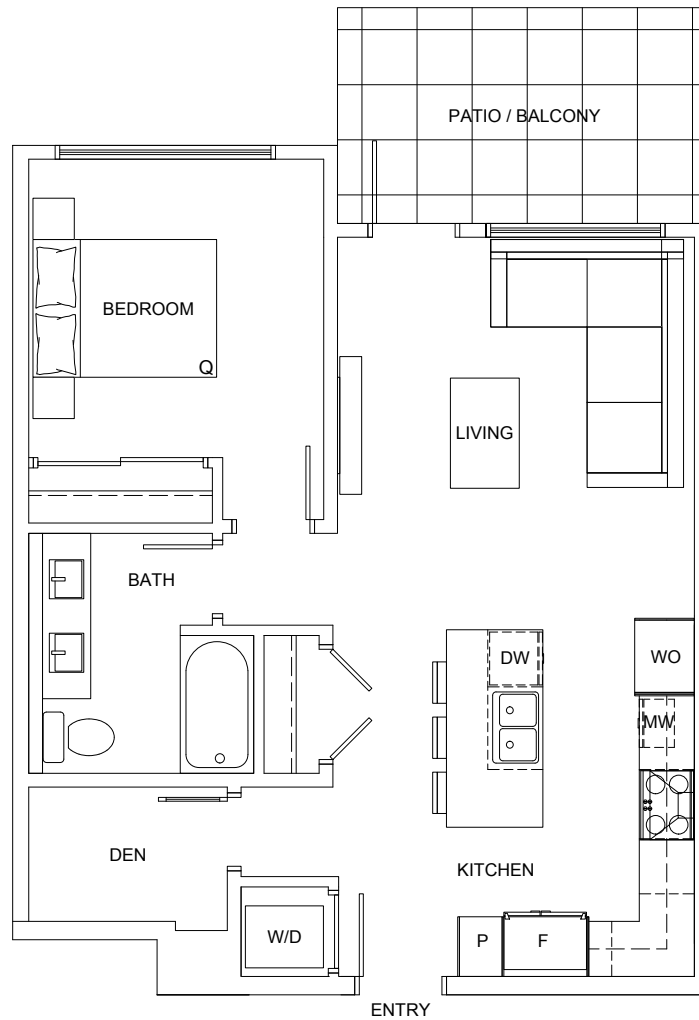
107

110

BATHROOMS: 1

INDOOR LIVING: 739 SQ FT

OUTDOOR LIVING: 101-107 SQ FT



E (LEVEL 2-6)

1 Bedroom + Den

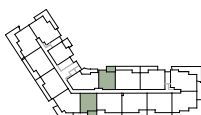
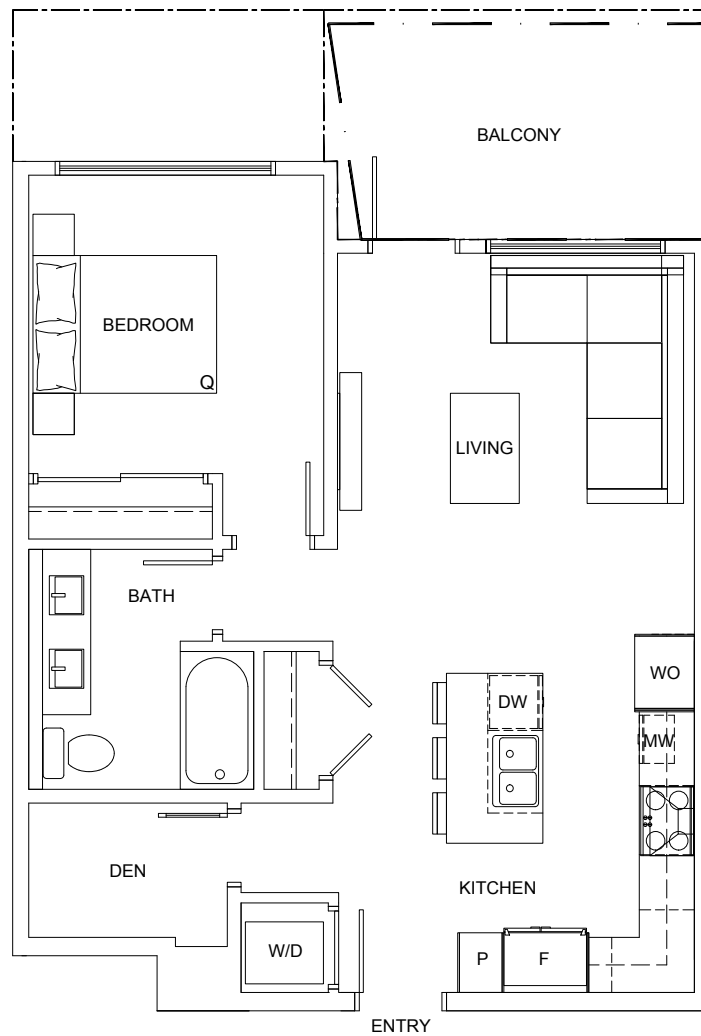
207, 307, 407, 507, 607

210, 310, 410, 510, 610

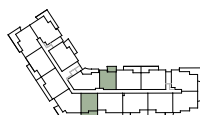
BATHROOMS: 1

INDOOR LIVING: 739 SQ FT

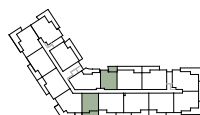
OUTDOOR LIVING: 105 - 172 SQ FT



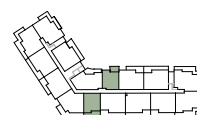
LEVEL TWO



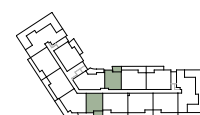
LEVEL THREE



LEVEL FOUR



LEVEL FIVE



LEVEL SIX

F (LEVEL 6)

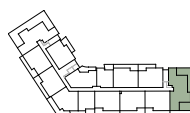
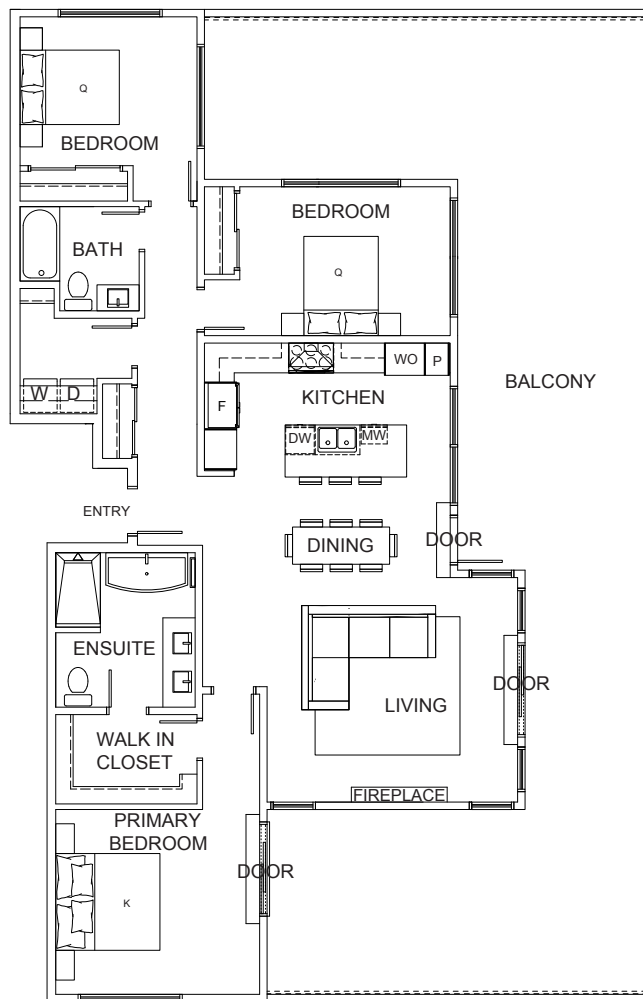
3 Bedroom

613

BATHROOMS: 2

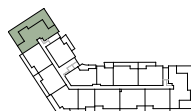
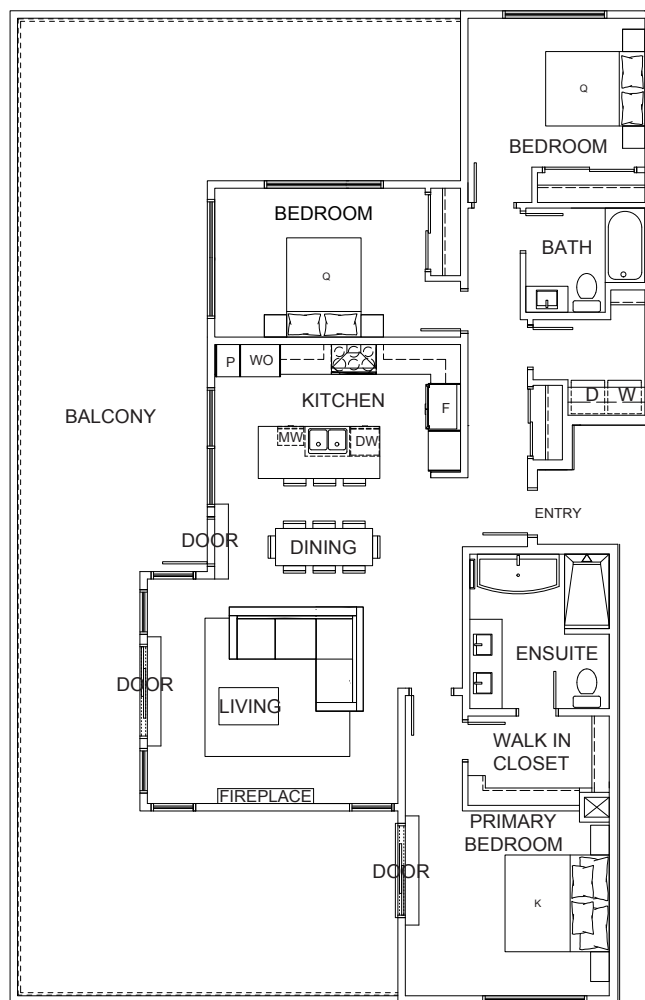
INDOOR LIVING: 1536 SQ FT

OUTDOOR LIVING: 1108 SQ FT



LEVEL SIX

OUTDOOR LIVING: 1108 SQ FT



VISTA POINT

G (MAIN LEVEL)

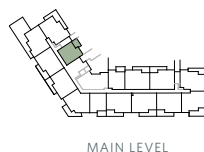
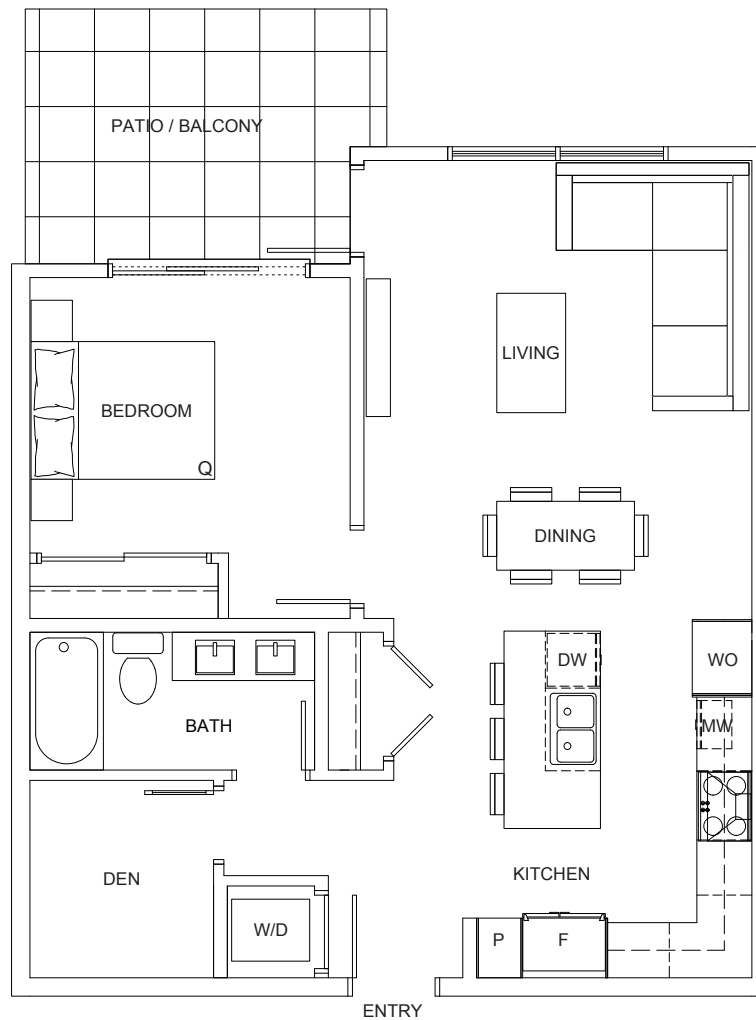
1 Bedroom + Flex

103

BATHROOMS: 1

INDOOR LIVING: 761 SQ FT

OUTDOOR LIVING: 115 SQ FT



G (LEVEL 2)

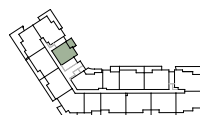
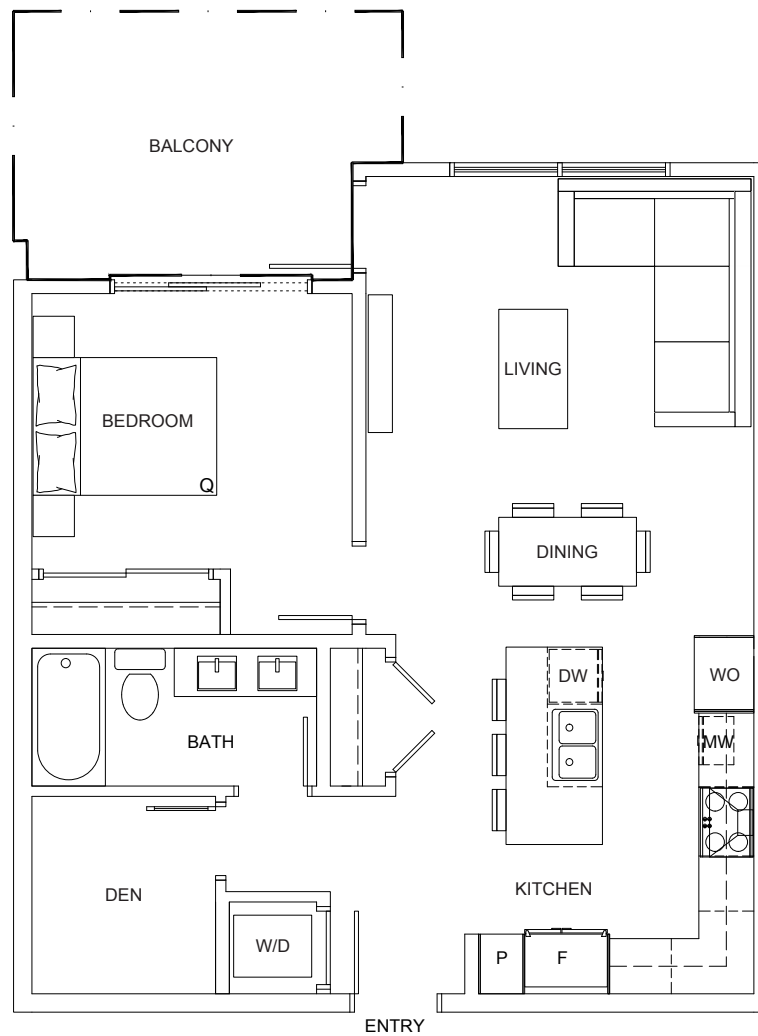
1 Bedroom + Den

203

BATHROOMS: 1

INDOOR LIVING: 761 SQ FT

OUTDOOR LIVING: 115 SQ FT



LEVEL TWO



TOWNHOMES

FEATURES & FINISHES

2507, 2509, 2511 BRONZITE PLACE

MOUNTAINSIDE LIVING

- 3 townhomes with 3 bedrooms + flex space
- Developed by Seaclyff Properties and Keycorp Developments, and built by local reputable home builder, Verity Construction
- Striking architecture by Alan Lowe Architecture Inc.
- 2 secure underground parking stalls
- All of your daily essentials within a 5-minute drive - Costco, Save-on Foods, Everything Wine, Starbucks, and more
- Short distance to all of Bear Mountain's amenities – Golf course, tennis courts, pool and recreation centre, walking paths, dog park, hiking and mountain biking trails at your doorstep
- Close to transit & schools

LIFESTYLE AMENITIES

- Access to bicycle wash area in underground parkade
- Access to Fitness Centre with cardio and weight equipment
- Outdoor shared patio space off the fitness room with tables to socialize with neighbours in the sunshine
- Storage locker included with every unit

ELEVATED INTERIORS

- Interiors designed by award-winning Nygaard Interior Design
- Choice of two colour palettes featuring sleek, contrasting tones and clean lines
- Wide-plank luxury vinyl flooring throughout main living space and bedrooms, carpet on stairs
- 9-ft ceilings with large windows for optimal natural light
- Recessed LED lighting throughout the home
- Air conditioning and heating via 2 eco-friendly heat pumps to ensure year-round comfort
- Baseboard heating supplement
- 50 inch electric fireplace
- Gas hookup on patio/balcony for BBQ or fire table
- White solid shelves and chrome rods in all closets
- Contemporary roller blinds for control of natural light and UV protection
- Whirlpool front-loading washer and vented dryer

PEACE OF MIND

- Comprehensive warranty protection by Travelers Guarantee Company of Canada providing coverage for:
 - 2-year material warranty
 - 5-year building envelope warranty
 - 10-year structural defects warranty

KITCHENS

- Stainless steel appliance package:
 - Whirlpool 36" french door refrigerator with water dispenser
 - Whirlpool 36" gas cooktop with griddle
 - Under cabinet built-in concealed range hood fan
 - Whirlpool wall oven
 - Panasonic built-in microwave with trim kit
 - Whirlpool large capacity dishwasher
- Sleek matte black hardware and plumbing fixtures
- Contemporary cabinets and drawers with soft close feature, designed and built in Canada
- Built-in pantry with pullout shelving
- Under-cabinet LED lighting
- Premium quartz countertops with complementary tile backsplash
- Stainless steel under-mount sink with statement matte black faucet
- Recessed LED pot lights in ceiling

BATHROOMS

- Premium quartz countertops
- Tile flooring in all bathrooms
- Soft-close contemporary cabinetry with under cabinet motion sensor LED lighting
- Contemporary deep soaker tub in main bathrooms
- Walk-in shower in ensuite bathroom
- Modern under-mount sinks with sleek single handle faucet
- Matte black plumbing fixtures and towel bar
- Toilet with soft-close feature

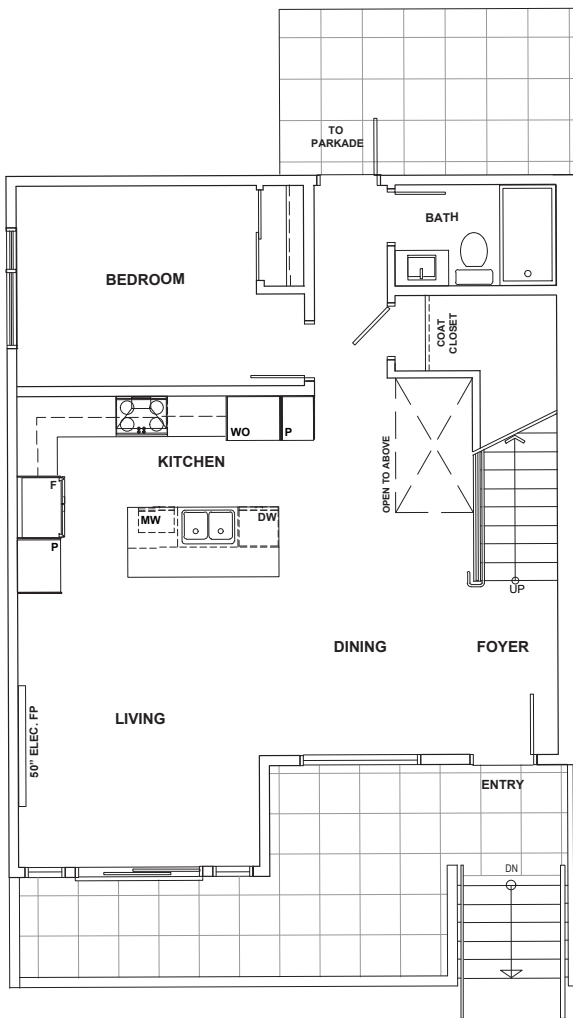
SECURITY & TECHNOLOGY

- Private access to smart entry system at Lobby door for visitor pre-screening
- Smart Parcel system for courier and Amazon deliveries in lobby
- Secure, fob entry system to access lobby, elevator, underground parkade and amenity rooms
- Secure residential underground parking with gate
- Motion sensors on parkade lights for energy and cost efficiency
- Well-lit outdoor common areas and pedestrian walkways

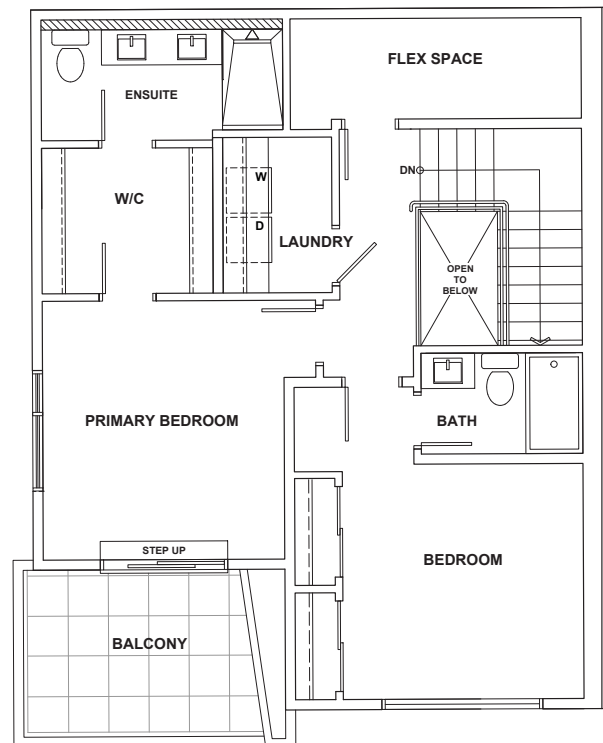
2507 BRONZITE PLACE

3 Bedroom + Flex

BATHROOMS: 3
 INDOOR LIVING: 1728 SQ FT
 OUTDOOR LIVING: 281 SQ FT



MAIN LEVEL: 866 SQ FT

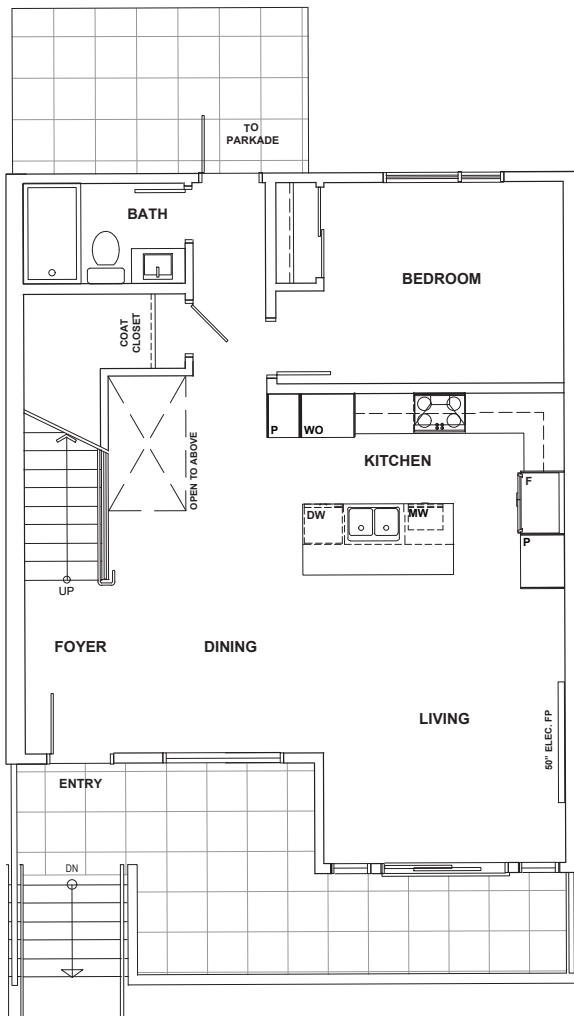


UPPER LEVEL: 862 SQ FT

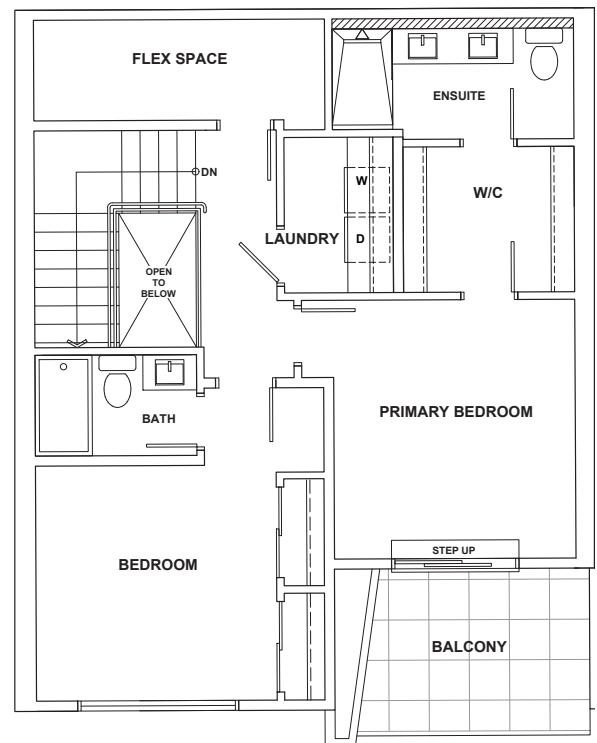
2509 BRONZITE PLACE

3 Bedroom + Flex

BATHROOMS: 3
 INDOOR LIVING: 1747 SQ FT
 OUTDOOR LIVING: 281 SQ FT



MAIN LEVEL: 876.2 SQ FT

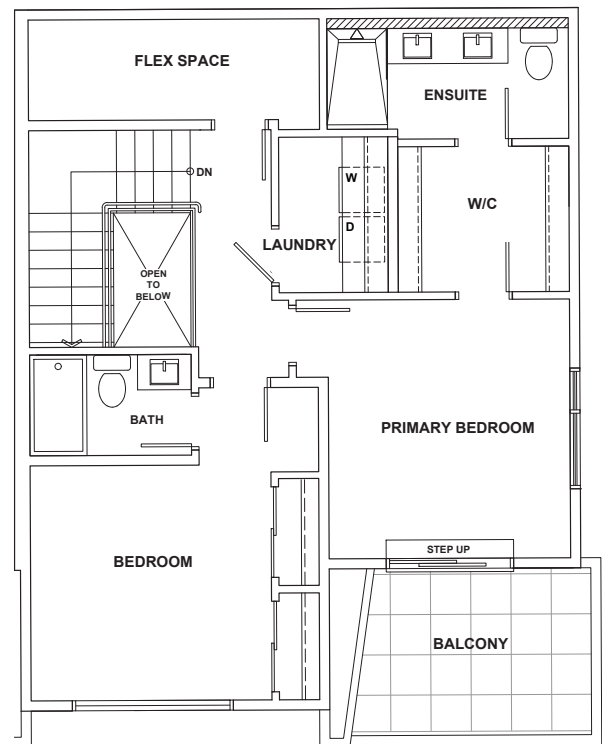
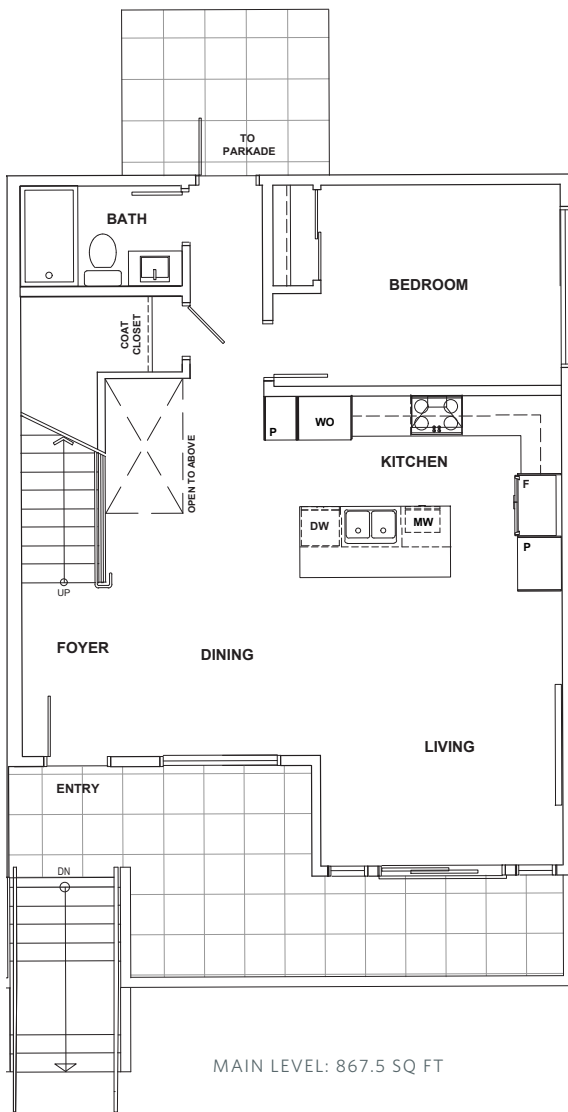


UPPER LEVEL: 870.8 SQ FT

2511 BRONZITE PLACE

3 Bedroom + Flex

BATHROOMS: 3
 INDOOR LIVING: 1728.5 SQ FT
 OUTDOOR LIVING: 281 SQ FT



FEATURES & FINISHES

2508, 2510, 2512
2516, 2518, 2520, 2522
BRONZITE PLACE

MOUNTAINSIDE LIVING

- 7 townhomes with 4 bedrooms/4 bathrooms + rec room
- Developed by Seacliff Properties and Keycorp Developments, and built by local reputable home builder, Verity Construction
- Striking architecture by Victoria Design Group
- All of your daily essentials within a 5-minute drive - Costco, Save-on Foods, Everything Wine, Starbucks, and more
- Short distance to all of Bear Mountain's amenities – Golf course, tennis courts, pool and recreation centre, walking paths, dog park, hiking and mountain biking trails at your doorstep
- Close to transit & schools
- Unparalleled views of the Juan de Fuca Strait, Mt Baker and the Olympic Mountains

ELEVATED INTERIORS

- Interiors designed by award-winning Nygaard Interior Design
- Choice of two colour palettes featuring sleek, contrasting tones and clean lines
- Wide-plank luxury vinyl flooring throughout main living space and carpet in bedrooms, office, rec room and stairs
- 9-ft ceilings with large windows for optimal natural light
- Recessed LED lighting throughout the home
- Air conditioning and heating via dual head ductless heat pump to ensure year-round comfort
- Baseboard heating supplement
- 50 inch electric fireplace
- White solid shelves and black rods in all closets
- Contemporary roller blinds for control of natural light and UV protection
- Whirlpool front-loading washer and dryer

PEACE OF MIND

- Comprehensive warranty protection by Travelers Guarantee Company of Canada providing coverage for:
 - 2-year material warranty
 - 5-year building envelope warranty
 - 10-year structural defects warranty

KITCHENS

- Stainless steel appliance package:
 - Whirlpool 36" french door refrigerator with water dispenser
 - Whirlpool 36" gas cooktop with griddle
 - Under cabinet built-in concealed range hood fan
 - Whirlpool wall oven
 - Panasonic built-in microwave
 - Whirlpool large capacity dishwasher
- Sleek matte black hardware and plumbing fixtures
- Contemporary cabinets and drawers with soft close feature, designed and built in Canada
- Built-in pantry with pullout shelving
- Under-cabinet LED lighting
- Premium quartz countertops with complementary tile backsplash
- Stainless steel under-mount sink with statement matte black faucet
- Recessed LED pot lights in ceiling

BATHROOMS

- 4 Bathrooms
- Premium quartz countertops
- Tile flooring in main bathroom and ensuite bathrooms
- Soft-close contemporary cabinetry with under cabinet motion sensor LED lighting
- Contemporary deep soaker tub in main bathrooms
- Walk-in shower in ensuite bathroom
- Modern under-mount sinks with sleek single handle faucet
- Matte black plumbing fixtures and towel bar
- Toilet with soft-close feature

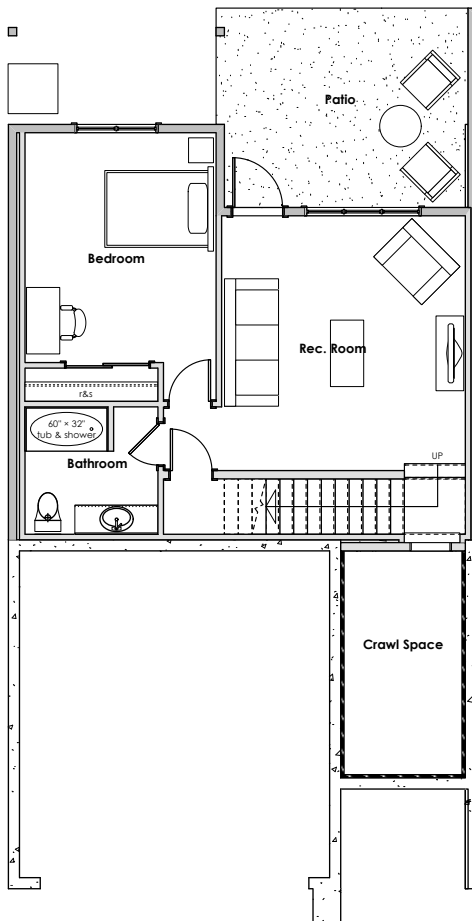
REFINED EXTERIORS

- Well-lit outdoor common areas and pedestrian walkways
- 2 secure garage parking spots
- Under deck storage – Block 2 only
- Gas hookup on patio/balcony for BBQ or fire table

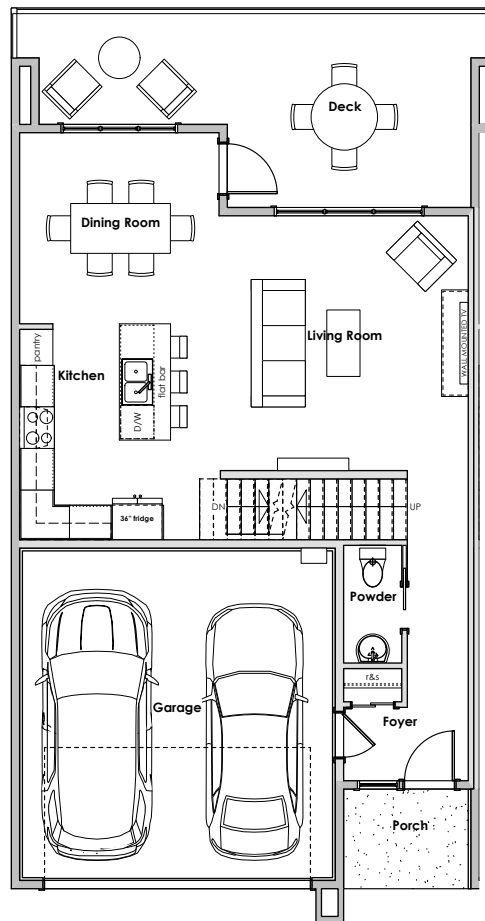
2508 BRONZITE PLACE

4 Bedroom + Rec Room

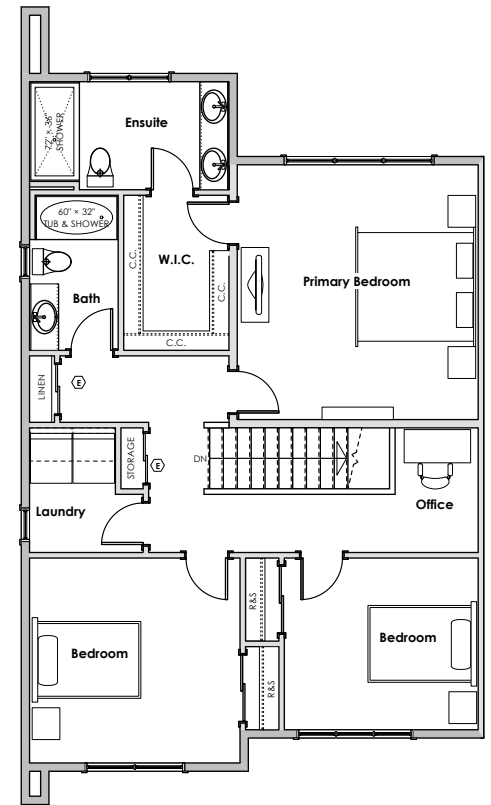
BATHROOMS: 4
LIVING AREA: 2387 SQ FT
GARAGE: 420 SQ FT



LOWER LEVEL
655 sq. ft.



MAIN LEVEL
739 sq. ft.



UPPER LEVEL
1026 sq. ft.

VISTAPOINTVICTORIA.COM

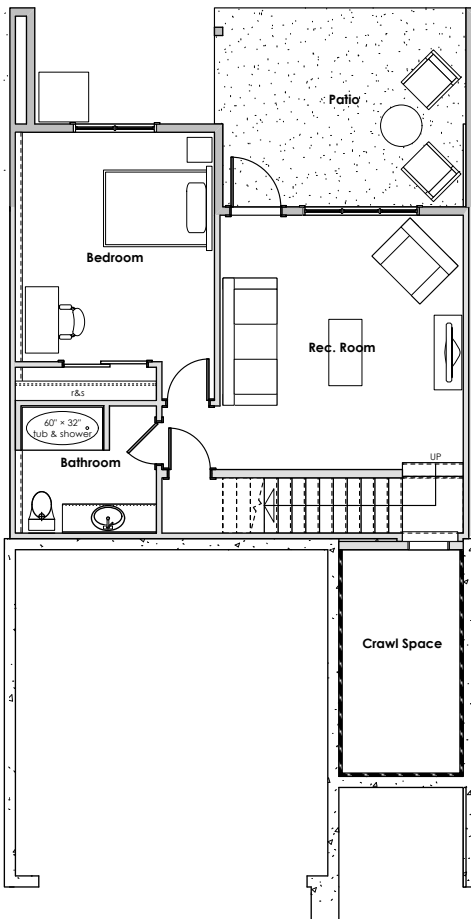
Sales and Marketing by Royal LePage Coast Capital Realty, Mike Hartshorne Personal Real Estate Corporation and Jenn Raappana Personal Real Estate Corporation. The developer reserves the right to make changes, modifications or substitutions to the building design, specifications and floor plans should they be necessary. Final floor plans may be a mirror image of the floor plans shown. Balcony/patio sizes vary floor to floor. Interior square footage and room sizes are based on preliminary survey measurements. Sizes are approximate and actual square footage may vary from the final survey and architectural drawings. This is not an offering for sale. Any such offering can only be made by way of disclosure statement. E. & O.E.



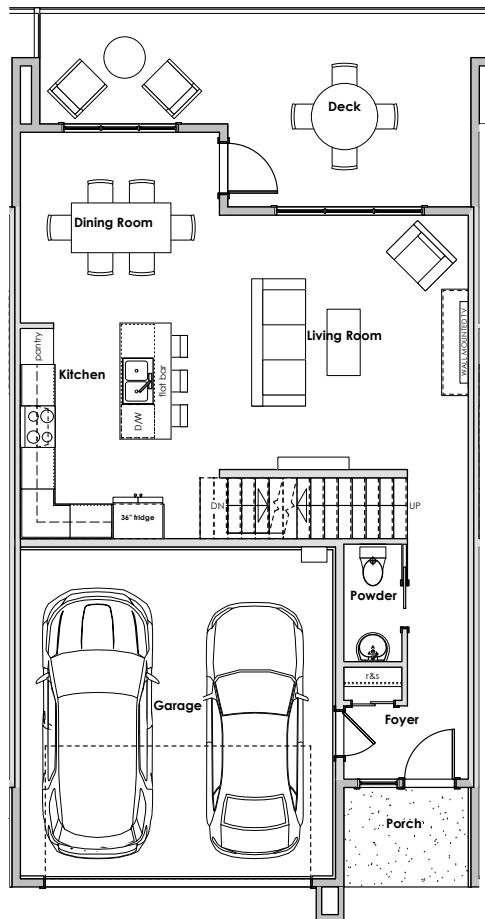
2510 BRONZITE PLACE

4 Bedroom + Rec Room

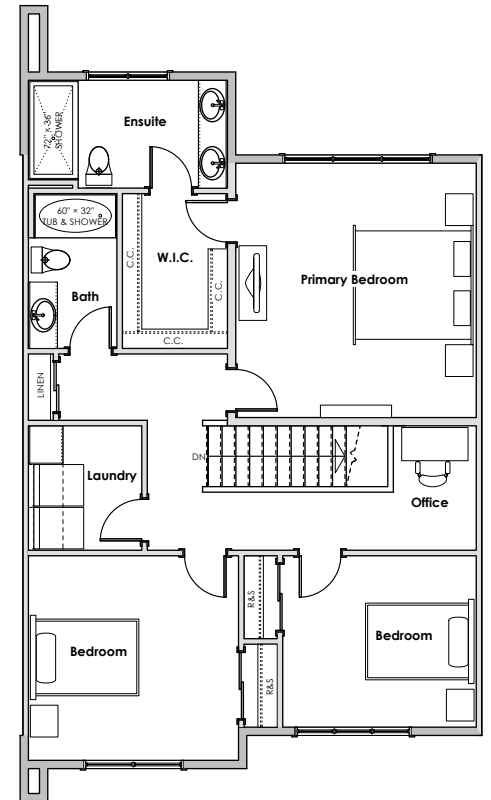
BATHROOMS: 4
LIVING AREA: 2375 SQ FT
GARAGE: 418 SQ FT



LOWER LEVEL
618 sq. ft.



MAIN LEVEL
736 sq. ft.

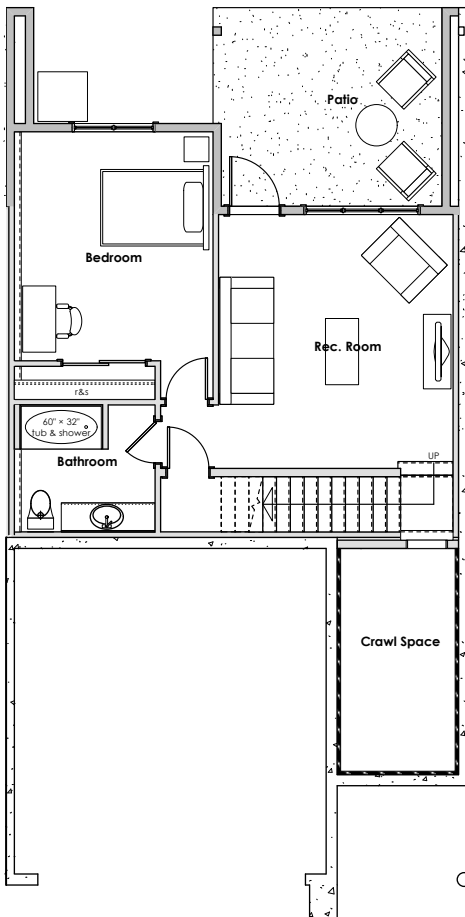


UPPER LEVEL
1021 sq. ft.

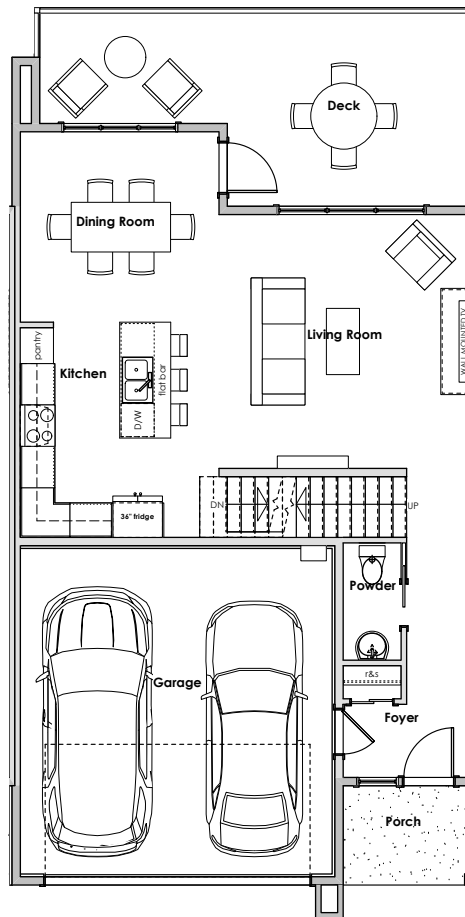
2512 BRONZITE PLACE

4 Bedroom + Rec Room

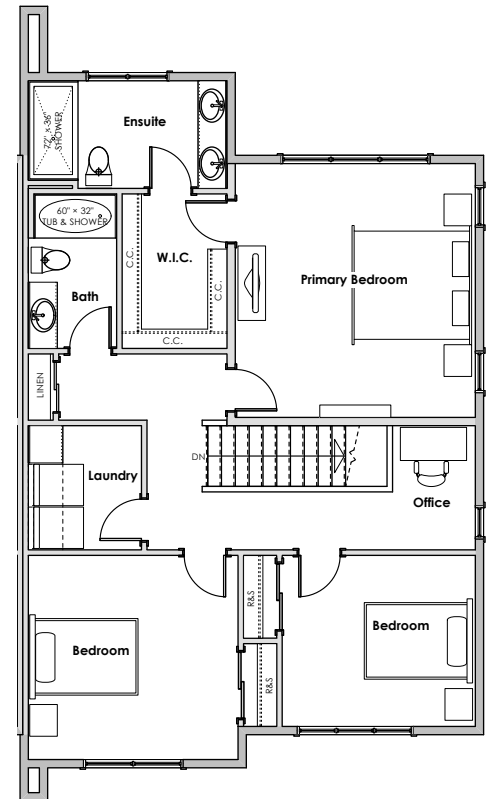
BATHROOMS: 4
LIVING AREA: 2390 SQ FT
GARAGE: 418 SQ FT



LOWER LEVEL
622 sq. ft.



MAIN LEVEL
742 sq. ft.

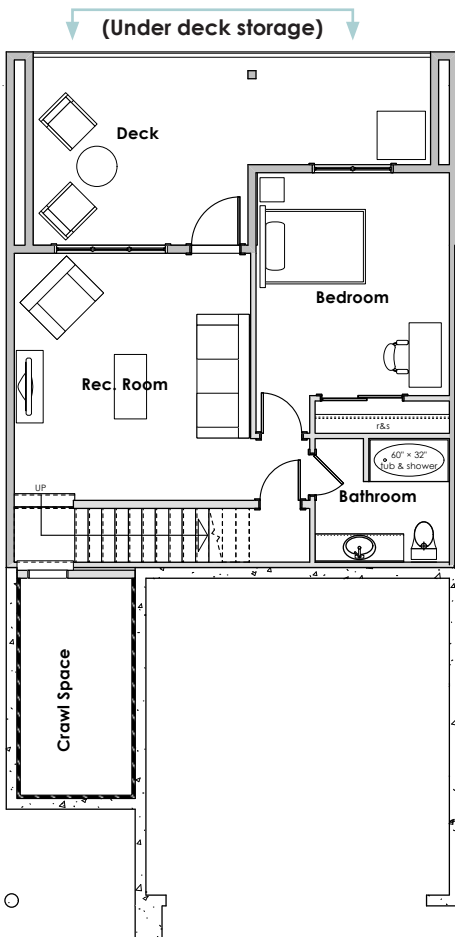


UPPER LEVEL
1026 sq. ft.

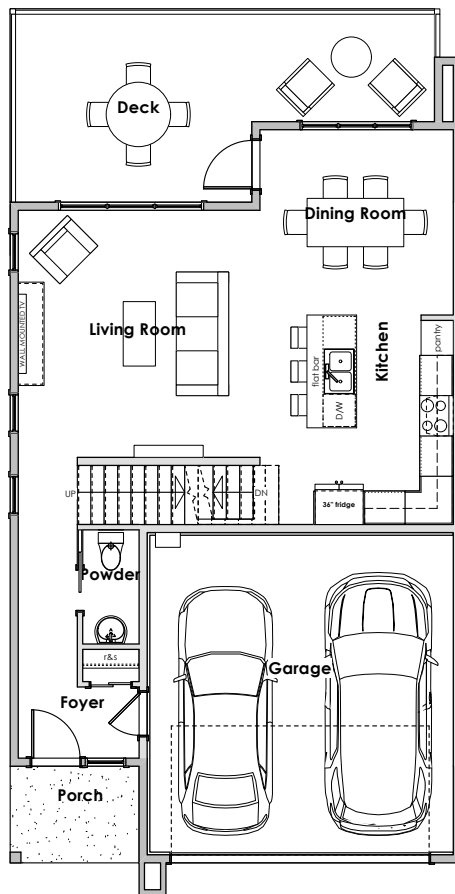
2516 BRONZITE PLACE

4 Bedroom + Rec Room

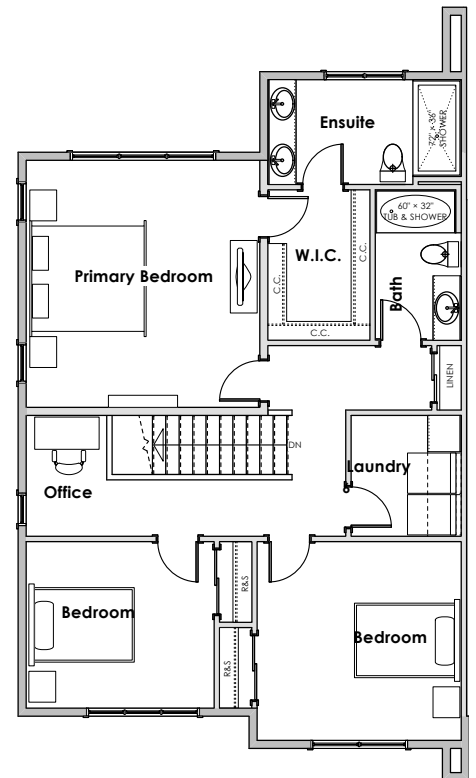
BATHROOMS: 4
LIVING AREA: 2390 SQ FT
GARAGE: 418 SQ FT



LOWER LEVEL
622 sq. ft.



MAIN LEVEL
742 sq. ft.

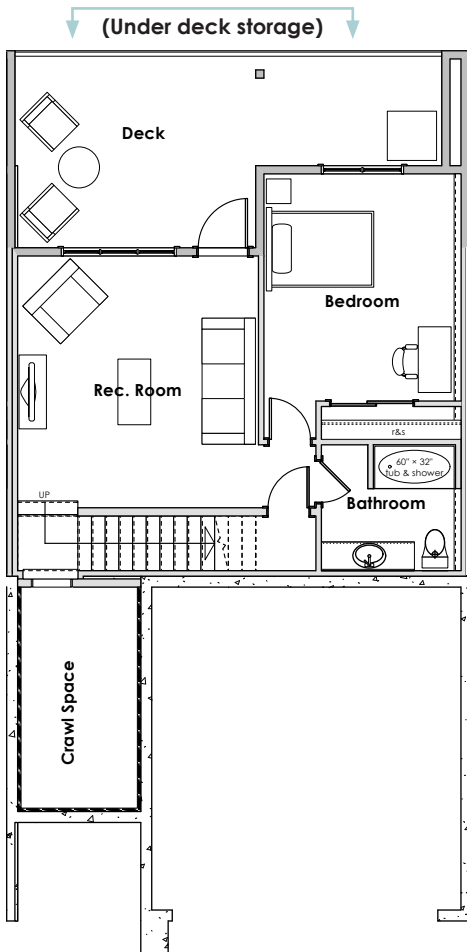


UPPER LEVEL
1026 sq. ft.

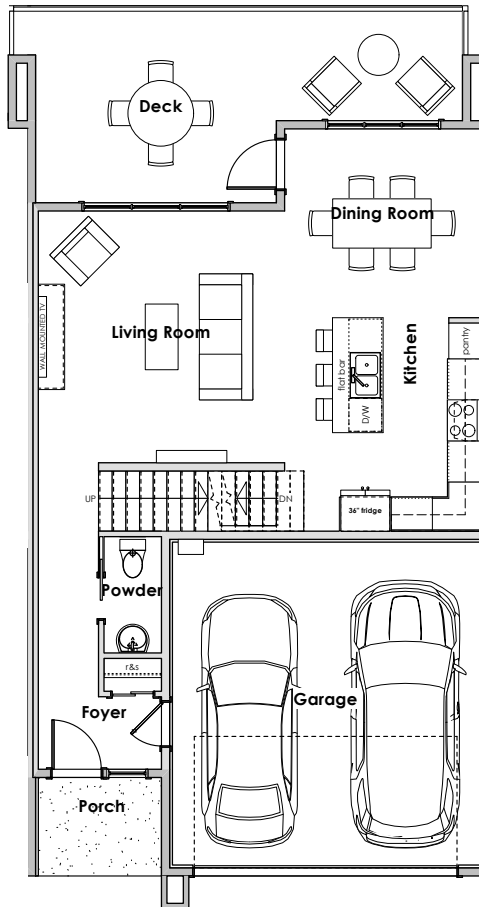
2518 BRONZITE PLACE

4 Bedroom + Rec Room

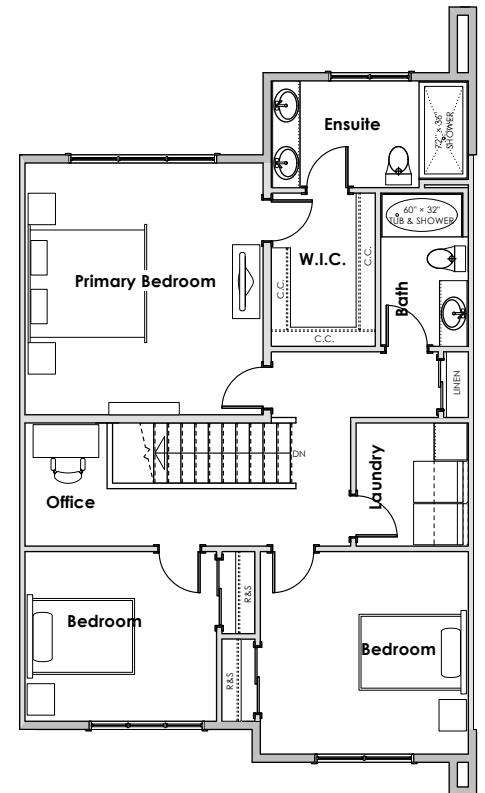
BATHROOMS: 4
LIVING AREA: 2375 SQ FT
GARAGE: 418 SQ FT



LOWER LEVEL
618 sq. ft.



MAIN LEVEL
736 sq. ft.

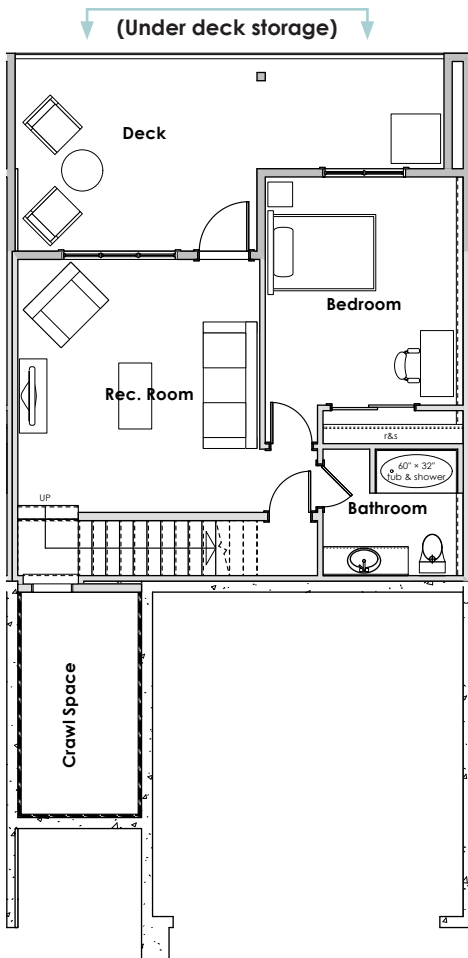


UPPER LEVEL
1021 sq. ft.

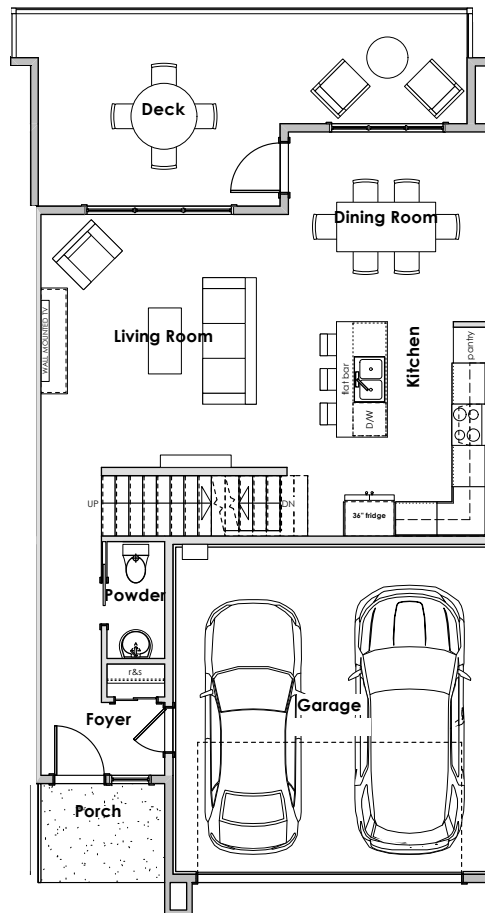
2520 BRONZITE PLACE

4 Bedroom + Rec Room

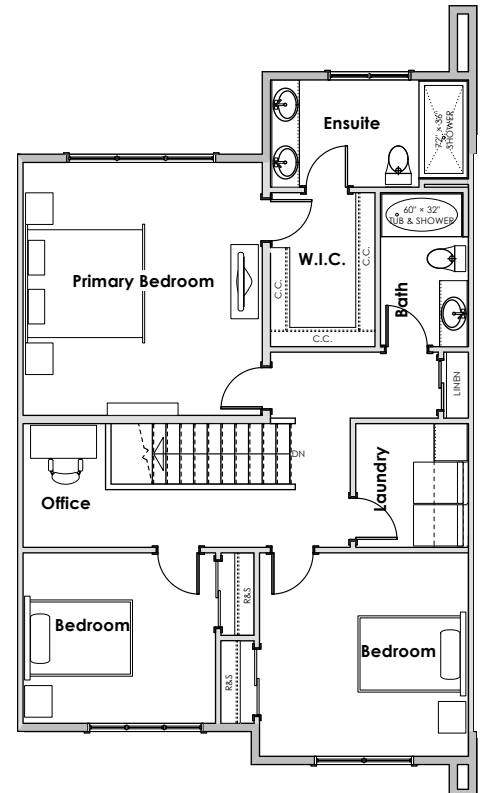
BATHROOMS: 4
LIVING AREA: 2375 SQ FT
GARAGE: 418 SQ FT



LOWER LEVEL
618 sq. ft.



MAIN LEVEL
736 sq. ft.

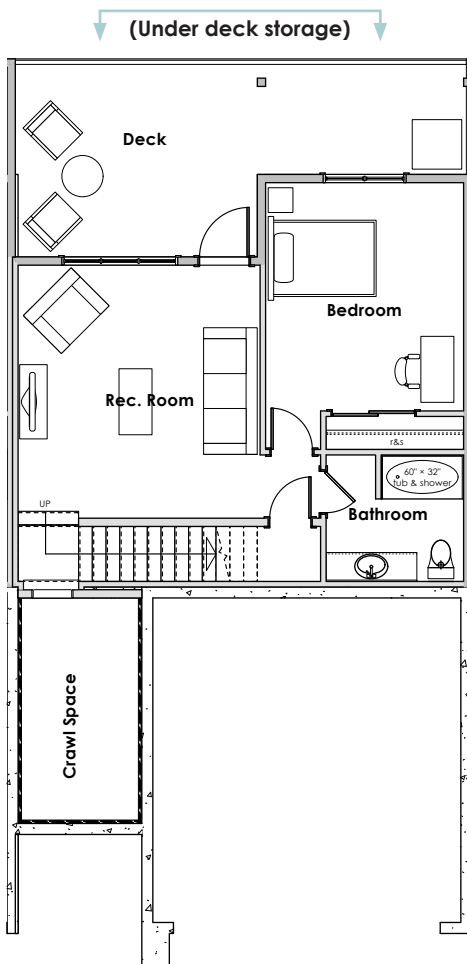


UPPER LEVEL
1021 sq. ft.

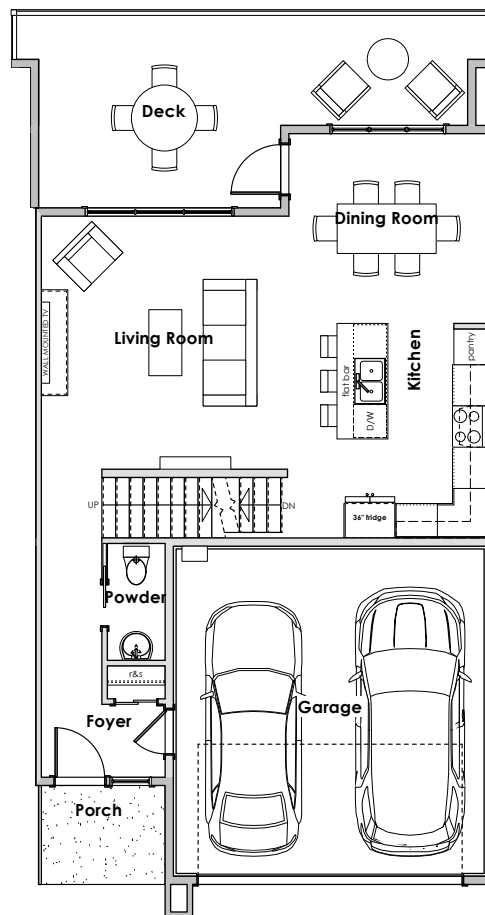
2522 BRONZITE PLACE

4 Bedroom + Rec Room

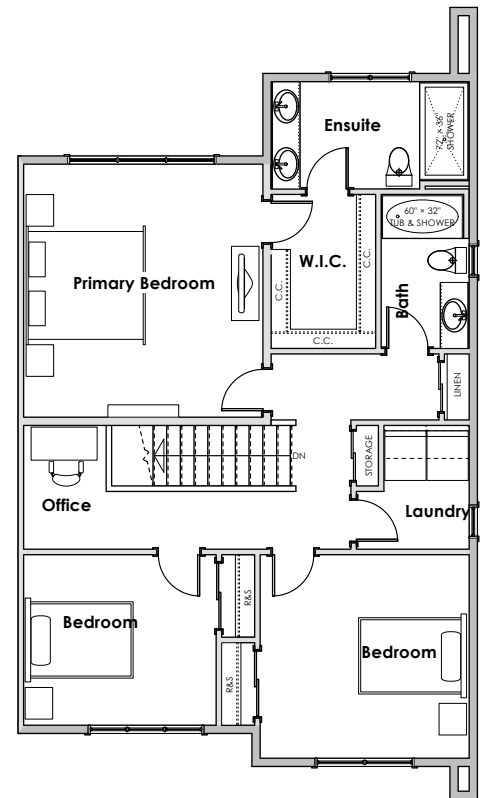
BATHROOMS: 4
LIVING AREA: 2387 SQ FT
GARAGE: 420 SQ FT



LOWER LEVEL
622 sq. ft.



MAIN LEVEL
739 sq. ft.



UPPER LEVEL
1026 sq. ft.



THE RIDGE AT VISTA POINT

VISTAPOINTVICTORIA.COM

SHOWHOME AT VISTA POINT:

1810 Selenite Place

Visit website for
showhome hours



CONTACT THE VISTA POINT SALES TEAM

250-474-4800 info@southislandhometeam.com

SEACLIFF
PROPERTIES



Sales and Marketing by Mike Hartshorne Personal Real Estate Corporation of Royal LePage Coast Capital Realty. The developer reserves the right to make changes, modifications or substitutions to the building design, specifications and floor plans should they be necessary. Final floor plans may be a mirror image of the floor plans shown. Balcony/patio sizes vary floor to floor. Interior square footage and room sizes are based on preliminary survey measurements. Sizes are approximate and actual square footage may vary from the final survey and architectural drawings. This is not an offering for sale. Any such offering can only be made by way of disclosure statement. E. & O.E